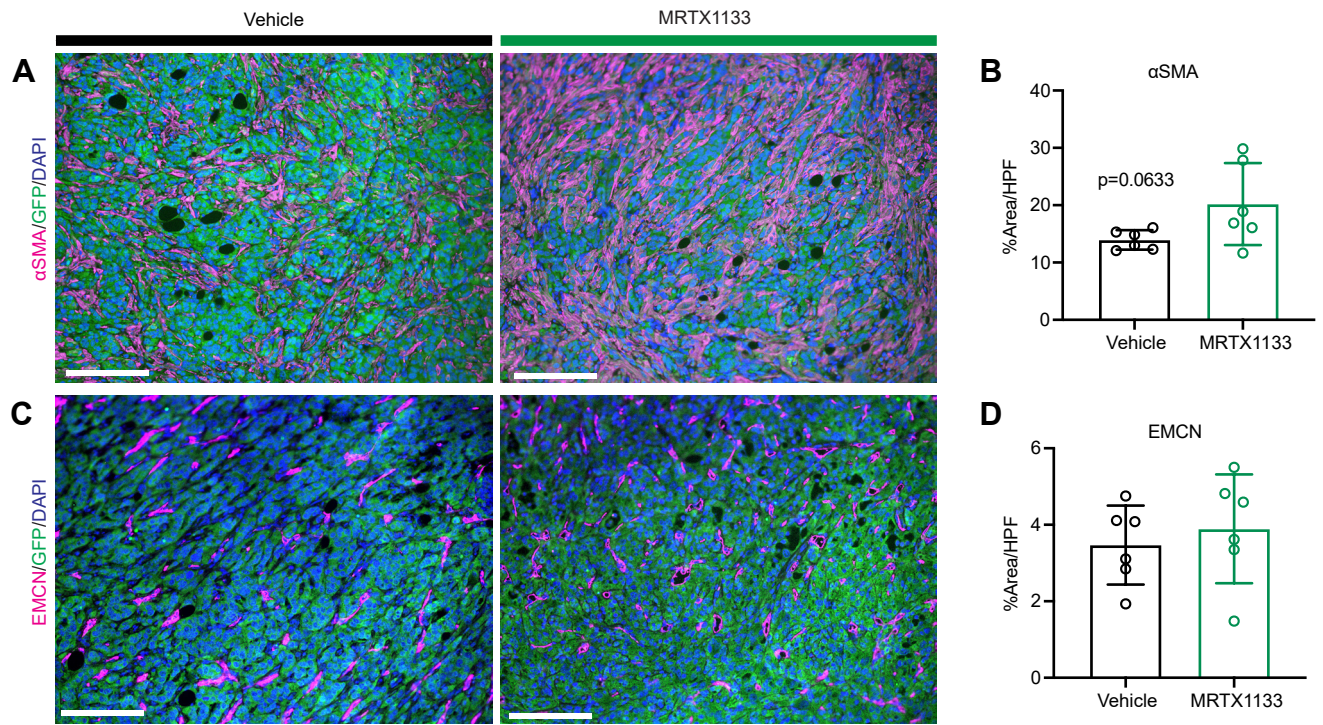


Figure S4

6419c5 - orthotopic, 7d



**Supplementary Figure 4. MRTX1133 elicits changes in the tumor stroma and vasculature.**

**(A)** Representative co-immunofluorescence images of  $\alpha$ SMA, GFP, and DAPI in vehicle and MRTX1133 treated tumors (6419c5, orthotopic, 7d). Scale bars, 100  $\mu$ m. Objective, 20x.

**(B)** Quantitation of fibroblasts ( $\alpha$ SMA<sup>+</sup>) as percent area per high power field (HPF) in vehicle (n=6) and MRTX1133 treated tumors (n=6). At least 3 fields of view were averaged per tumor. p-value was determined by Student's unpaired t-test. Error bars indicate SD.

**(C)** Representative co-immunofluorescence images of EMCN, GFP, and DAPI in vehicle and MRTX1133 treated tumors (6419c5, orthotopic, 7d). Scale bars, 100  $\mu$ m. Objective, 20x.

**(D)** Quantitation of blood vessels (EMCN<sup>+</sup>) as percent area per high power field (HPF) in vehicle (n=6) and MRTX1133 treated tumors (n=6). At least 3 fields of view were averaged per tumor. p-value was determined by Student's unpaired t-test. Error bars indicate SD.