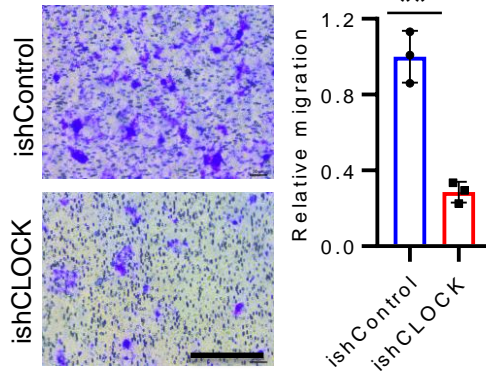
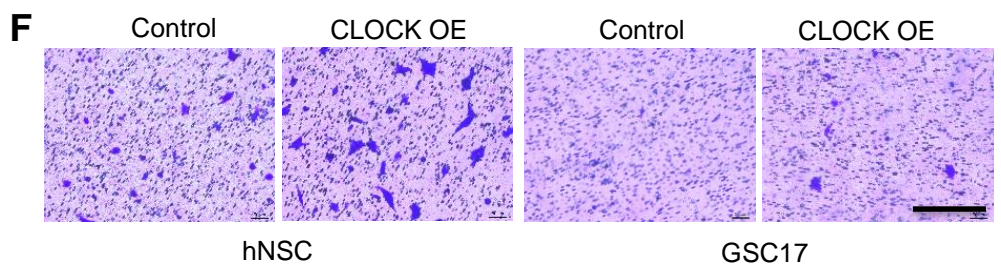
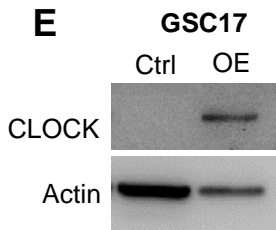
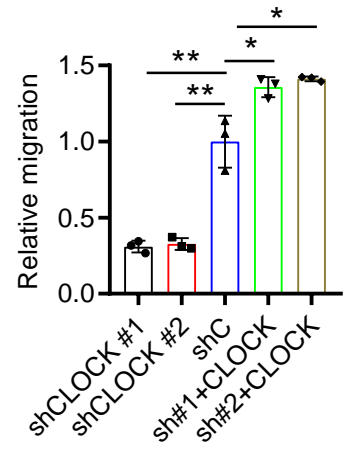
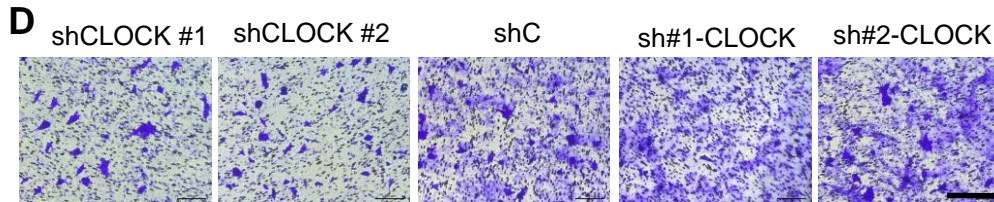
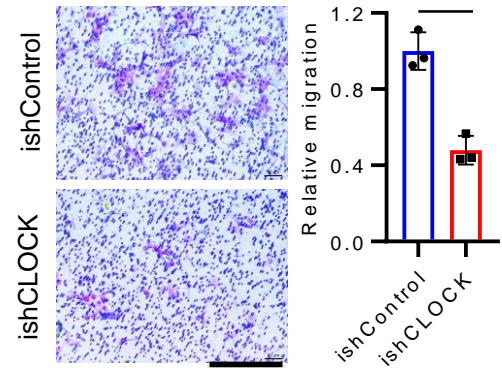


**B** Transwell migration assay with GSC20 CM



**C** Transwell migration assay with U87 CM



**Figure S3. CLOCK depletion impairs microglia migration.**

**(A)** GSEA for microglia signature in CLOCK-high TCGA GBM patients comparing to CLOCK-low patients. NES, normalized enrichment score; FDR, false discovery rate. The lower quartile was set to the cut-off value.

**(B)** Conditioned media from CLOCK-depleted GSC20 cells shows reduced ability to attract HMC3 microglia in a transwell assay. Representative images (*left panel*) and quantification (*right panel*). Scale bar, 200  $\mu\text{m}$ ; n = 3 biological replicates; \*\* $P < 0.01$ .

**(C)** Conditioned media from CLOCK-depleted U87 cells shows reduced ability to attract HMC3 microglia in a transwell assay. Representative images (*left panel*) and quantification (*right panel*). Scale bar, 200  $\mu\text{m}$ ; n = 3 biological replicates; \*\* $P < 0.01$ .

**(D)** Conditioned media from CLOCK-depleted QPP7 cells shows reduced ability to attract HMC3 microglia in a transwell assay, which is rescued by re-expression of CLOCK. Representative images (*left panel*) and quantification (*right panel*). Scale bar, 200  $\mu\text{m}$ ; n = 3 biological replicates; \* $P < 0.05$  and \*\* $P < 0.01$ .

**(E)** Representative images of overexpression of CLOCK in GSC17.

**(F)** Representative images showing conditioned medium from CLOCK-overexpressed (OE) hNSC and GSC17 enhanced HMC3 microglia migration in a transwell assay. Scale bar, 200  $\mu\text{m}$ .