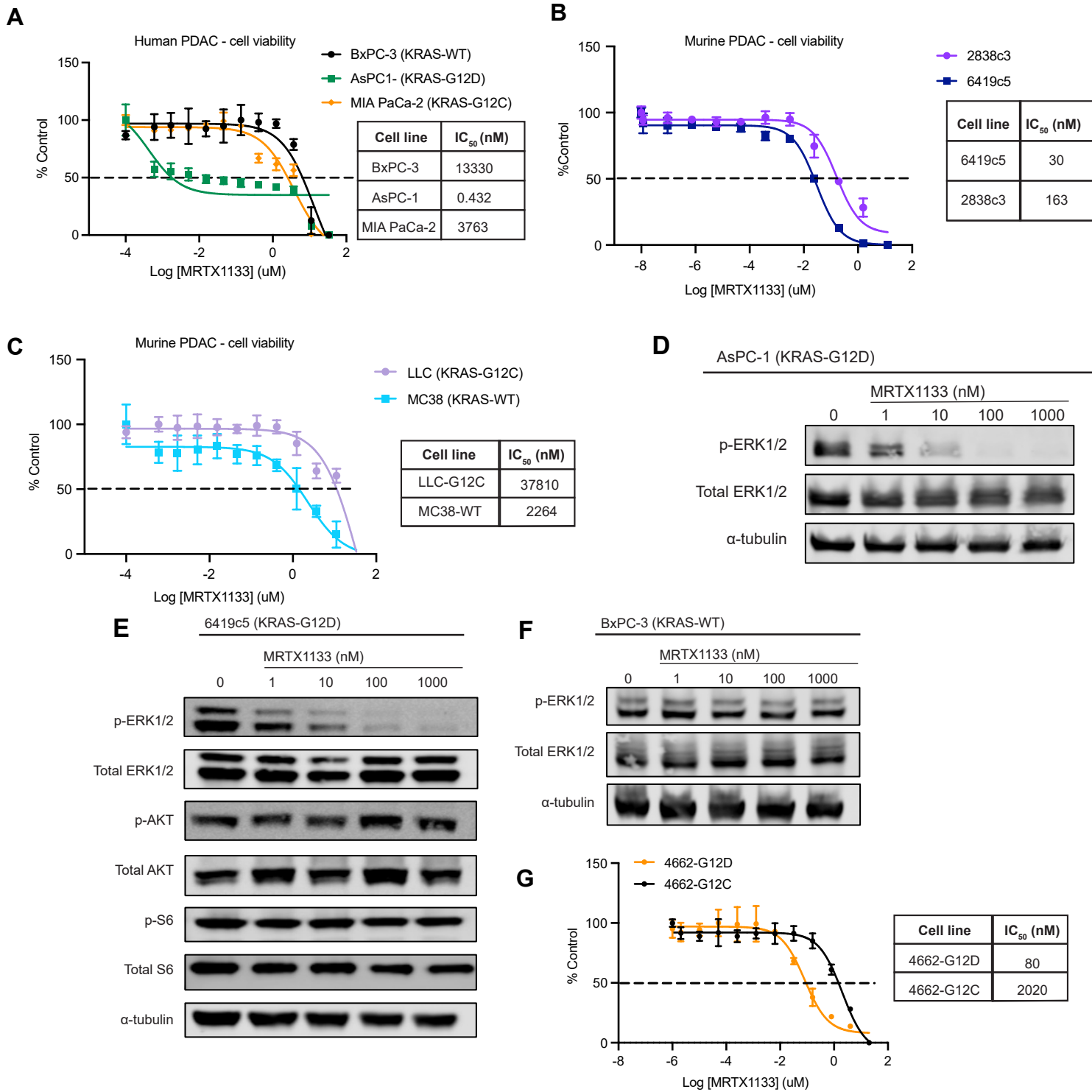


Figure S1



Supplementary Figure 1. MRTX1133 selectively inhibits KRAS^{G12D} and downstream MAPK signaling *in vitro*.

(A) MRTX1133 dose response of BxPC-3 (KRAS^{WT}), AsPC-1 (KRAS^{G12D}), and MIA PaCa-2 (KRAS^{G12C}) cells after 72h of treatment. 3-fold serial dilutions were used, and cell viability was measured with CellTiter-Glo. IC₅₀ values are listed.

(B) MRTX1133 dose response of two mouse KRAS^{G12D} lines (2838c3, 6419c5) after 72h of treatment. 8-fold serial dilutions were used. IC₅₀ values are listed.

(C) MRTX1133 dose response of LLC (KRAS^{G12C}) and MC38 (KRAS-WT) cells after 72h of treatment. 3-fold serial dilutions were used. IC₅₀ values are listed.

(D) Representative western blot of cell lysates from AsPC-1 (KRAS^{G12D}) cells treated with MRTX1133 or DMSO control for two hours.

(E) Representative western blot of cell lysates from 6419c5 (KRAS^{G12D}) cells treated with MRTX1133 or DMSO control for two hours.

(F) Representative western blot of cell lysates from BxPC-3 (KRAS-WT) cells treated with MRTX1133 or DMSO control for two hours.

(G) MRTX1133 dose response of 4662-KRAS^{G12D} and 4662-KRAS^{G12C} after 72h of treatment. 5-fold serial dilutions were used. IC₅₀ values are listed.