

## Supporting information for

Paeonol assists fluconazole and amphotericin B to inhibit virulence factors and pathogenicity against *Candida albicans*

Running title: Antifungal activity of PAE

Min Pan<sup>a,\*</sup>, Qirui Wang<sup>a,\*</sup>, Ting Cheng<sup>a</sup>, Daqiang Wu<sup>a,b,c,d</sup>, Tianming Wang<sup>a,c,d,e</sup>✉, Guiming Yan<sup>a,b,c,d</sup>✉, Jing Shao<sup>a,b,c,d</sup>✉

<sup>a</sup>Laboratory of Infection and Immunity, College of Integrated Chinese and Western Medicine (College of Life Science), Anhui University of Chinese Medicine, 436 Room, Zhijing Building, No. 350 Longzihu Road, Xinzhan District, Hefei 230012, P. R. China

<sup>b</sup>Institute of Integrated Traditional Chinese and Western Medicine, Anhui Academy of Chinese Medicine, Zhijing Building, 350 Longzihu Road, Xinzhan District, Hefei 230012, P. R. China

<sup>c</sup>Key Laboratory of Xin'An Medicine, Ministry of Education, Anhui Academy of Chinese Medicine, Xin'An Building, No. 103 Meishan Road, Shushan District, Hefei 230038, P. R. China

<sup>d</sup>Anhui Provincial Key Laboratory for Chinese Herbal Compound, Anhui Academy of Chinese Medicine, Hefei 230012, P. R. China

<sup>e</sup>Inflammation and Immune Mediated Diseases Laboratory of Anhui Province, School of Pharmacy, Anhui Medical University, 81 Meishan Road, Hefei 230032, P. R. China

\*The authors contribute equally to this paper.

✉Corresponding authors:

Dr. Tianming Wang, wtm1818@163.com

Prof. Guiming Yan, 922-119@163.com

Dr. Jing Shao, ustcnjnsjtu@126.com

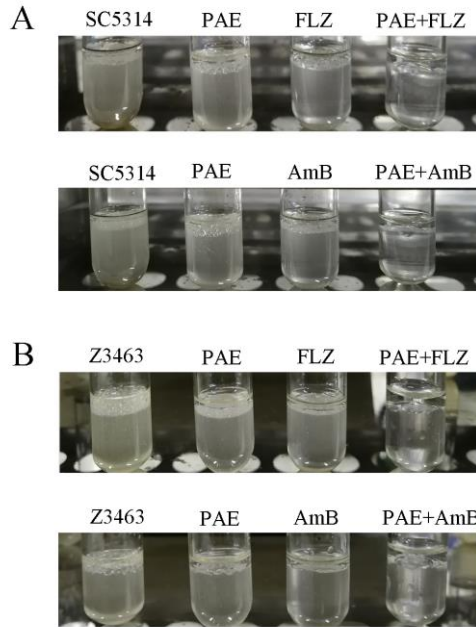
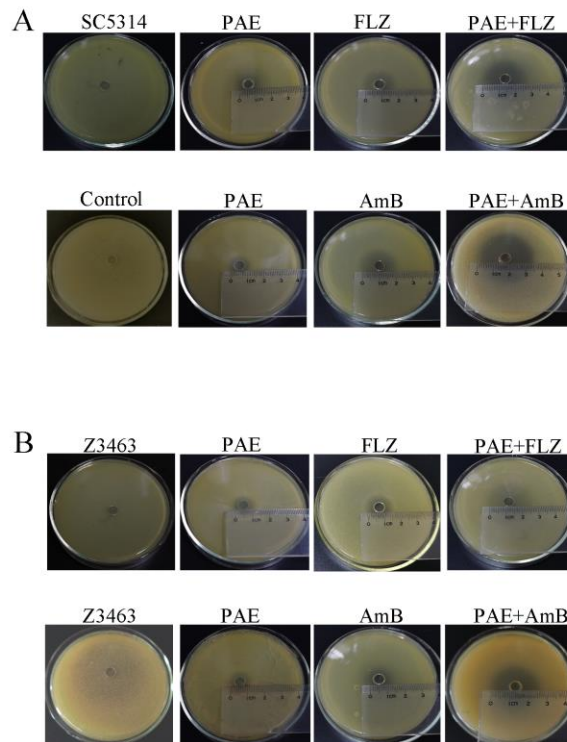
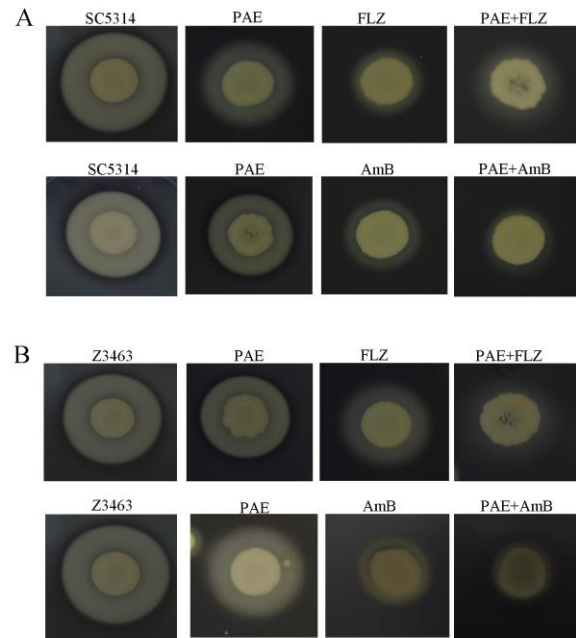


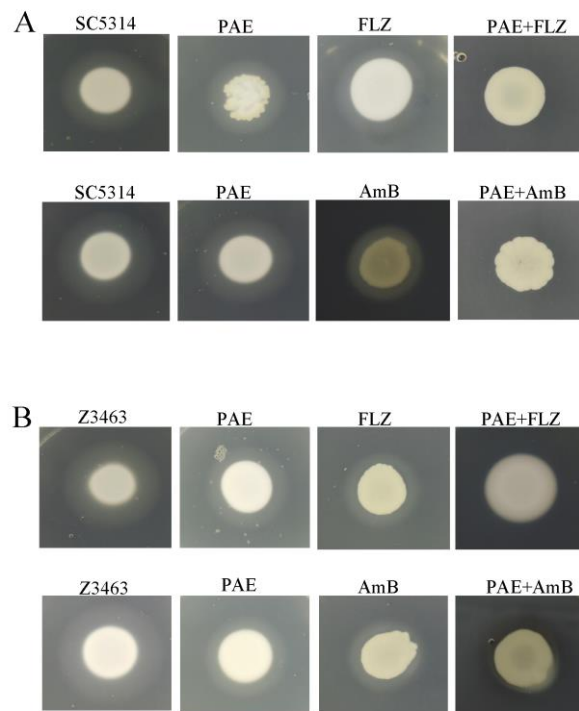
Figure S1. PAE alone and in combination with FLZ or AmB inhibited cell surface hydrophobicity (CSH). Representative images of CSH in *C. albicans* SC5314 (A) and *C. albicans* Z3463 (B). The other experiments can be found in Materials and Methods and Figure 1.



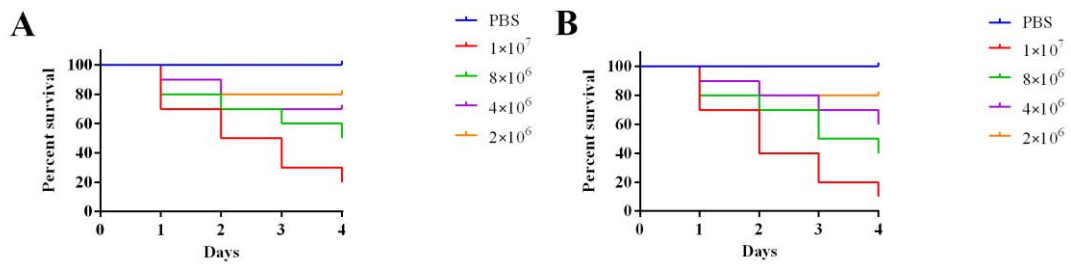
**Figure S2.** PAE alone and in combination with FLZ or AmB inhibited fungal growth in an Oxford cup. Representative photos of the growth of *C. albicans* SC5314 (A) and *C. albicans* Z3463 (B). The other experiments can be found in Materials and Methods and Figure 2.



**Figure S3.** PAE alone and in combination with FLZ or AmB inhibited the secretion of SAP. Representative photographs of SAP secretion in *C. albicans* SC5314 (A) and *C. albicans* Z3463 (B). The other experiments can be found in Materials and Methods and Figure 3.



**Figure S4.** PAE alone and in combination with FLZ or AmB inhibited the secretion of PL. Representative photographs of PL secretion in *C. albicans* SC5314 (A) and *C. albicans* Z3463 (B). The other experiments can be found in Materials and Methods and Figure 4.



**Figure S5.** Determination of LD50 of *C. albicans* SC5314 and Z3463 strains in *Galleria mellonella* larvae. The survival curves are shown for *Galleria mellonella* (n=10) infected with different concentrations of *C. albicans* SC5314 (A) or *C. albicans* Z3463 (B). The other experiments can be found in Materials and Methods.