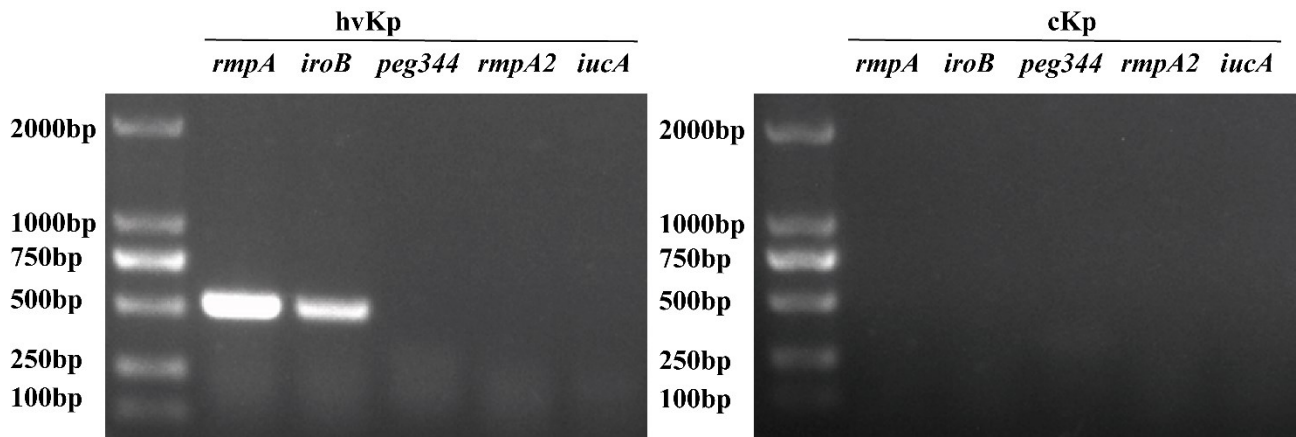


Supplementary Table 1: The plasmids of hypervirulent *Klebsiella pneumoniae* in the study

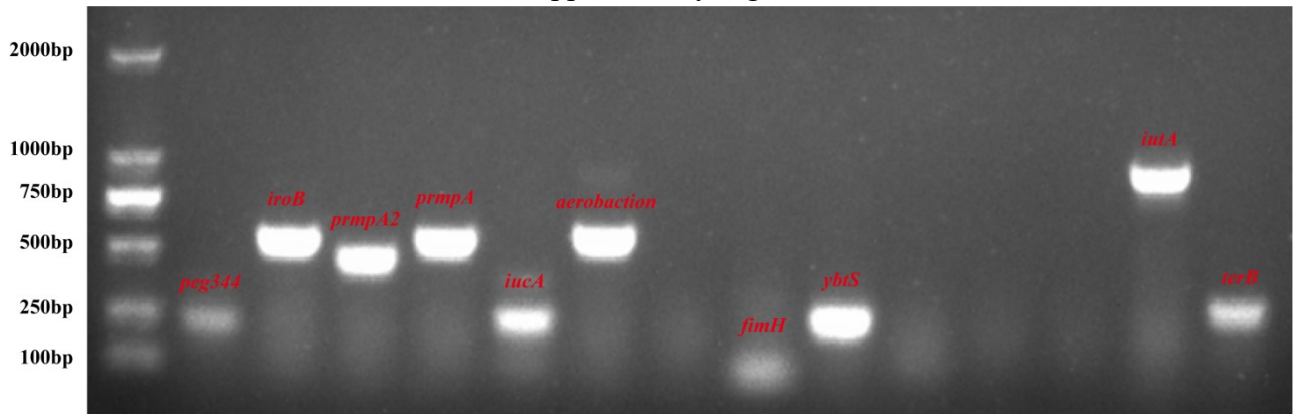
name	length	cov	circ	repeat	mult	graph path
contig_6	3027862	41	N	N	1	-9, -9, -9, -9, -8, -2, 6, 2, 8, 9
contig_4	721268	50	N	N	1	-9, -8, -2, 4, -10
contig_12	526279	53	N	N	1	10, 12, -10
contig_5	358517	54	N	N	1	-9, -9, -8, -2, 5, -10
contig_14	355144	52	N	N	1	-9, -9, -9, -9, -8, -2, 14, -10
contig_13	177011	30	Y	N	1	13
contig_17	113492	22	Y	N	1	17
contig_3	97917	49	N	N	1	-9, -9, -11, -2, 3, -10
contig_1	92282	49	N	N	1	10, 1, 2, 8, 9, 9, 9, 9, 10
contig_7	42894	52	N	N	1	-8, -2, 7, -10
contig_16	10455	268	Y	Y	6	16
contig_15	9319	483	Y	Y	10	15

Supplementary Fig 1



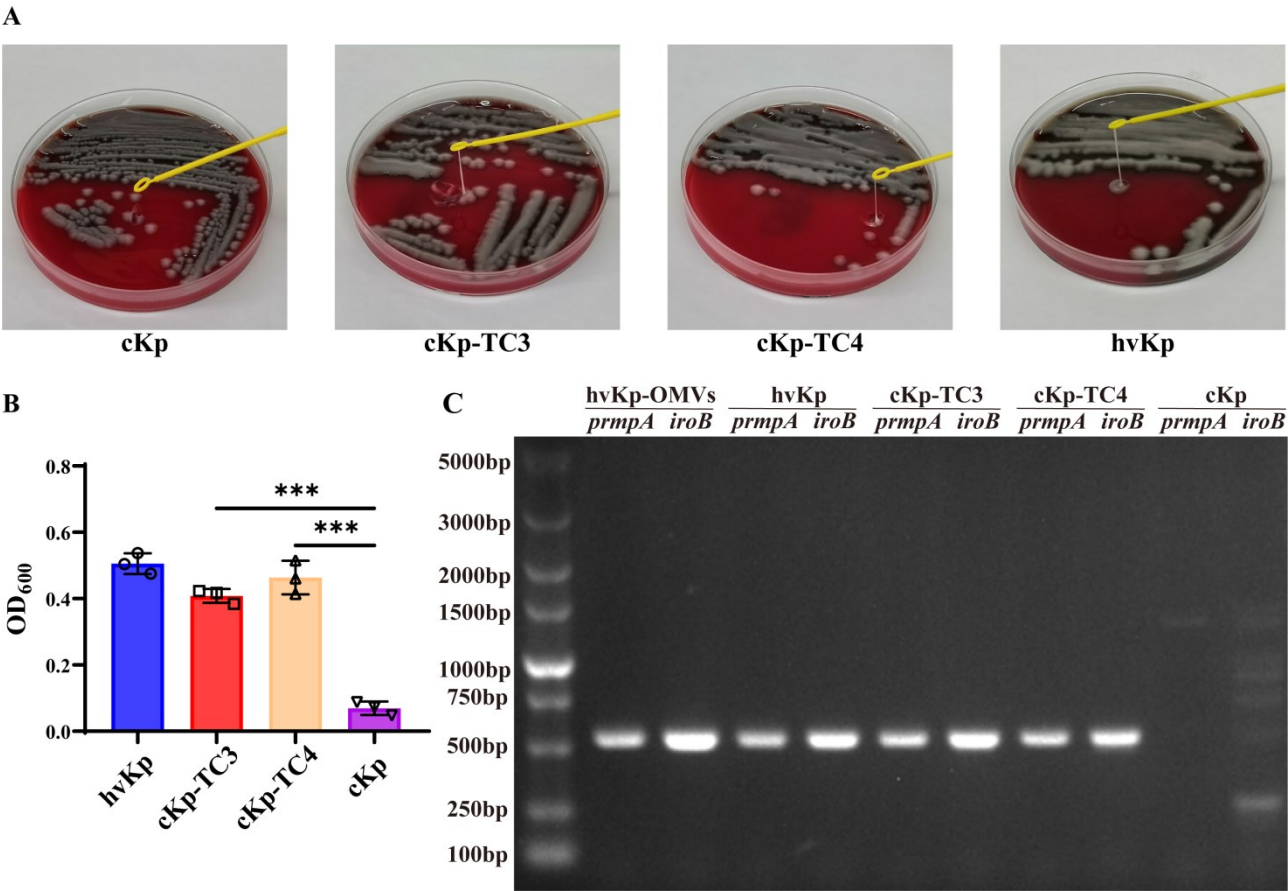
Supplementary Figure 1. PCR amplified fragments of the hvKp and cKp strains in the study.

Supplementary Fig 2



Supplementary Figure 2. PCR amplified fragments of a new hypervirulent *Klebsiella pneumoniae* clinical isolates .

Supplementary Fig 3



Supplementary Figure 3. OMVs derived from a new hypervirulent *Klebsiella pneumoniae* clinical isolates enhanced level of mucoviscosity and capsule production of cKp strains. (A) String tests on blood agar plates of cKp, cKp-TC3, cKp-TC4, and hvKp strains. (B) Mucoviscosity of hvKp-OMVs, hvKp, cKp-TC3, cKp-TC4 and cKp strains (+OMV_{hvKp}-100µg). Results are presented as mean±SEM, ***P < 0.001.