

## Table of Contents

Table S-1 Cell Culture and Viability Assay (HL-7702).....	1
Table S-2 Cell Culture and Viability Assay (HepG2).....	2
Table S-3 In Vivo Biodistribution Studies.....	3
Table S-4 In Vitro Drug Release Study.....	4
Figure S-1 Standard Curve of Paclitaxel.....	5
Figure S-2 HPLC Chromatograms of Eu-MOFs.....	6

**Table S-1 Cell Culture and Viability Assay (HL-7702)**

	Absorbance at 490 nm						
Concentrations of Eu-MOFs ( $\mu\text{g/mL}$ )	200	100	50	25	12.5	6.25	0
1	0.732	0.824	0.916	0.874	0.912	0.923	1.000
2	0.674	0.758	0.758	0.824	0.846	0.886	1.000
3	0.910	0.938	0.957	1.005	1.071	1.124	1.000
Cell viability	0.772	0.840	0.877	0.901	0.943	0.978	1.000
SD	0.123	0.091	0.105	0.093	0.116	0.128	0.000

**Table S-2 Cell Culture and Viability Assay (HepG2)**

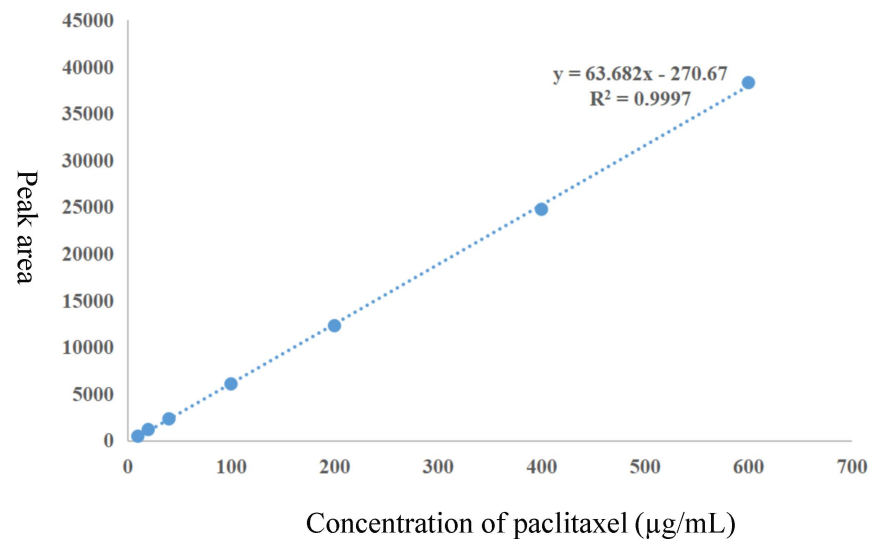
	Absorbance at 490 nm						
Concentrations of Eu-MOFs ( $\mu\text{g/mL}$ )	200	100	50	25	12.5	6.25	0
1	0.701	0.735	0.769	0.792	0.783	0.812	1.000
2	0.852	0.948	0.962	0.976	1.014	0.966	1.000
3	0.870	0.933	0.961	1.025	1.067	1.119	1.000
Cell viability	0.808	0.872	0.898	0.931	0.955	0.966	1.000
SD	0.093	0.119	0.111	0.123	0.151	0.154	0.000

**Table S-3 In Vivo Biodistribution Studies**

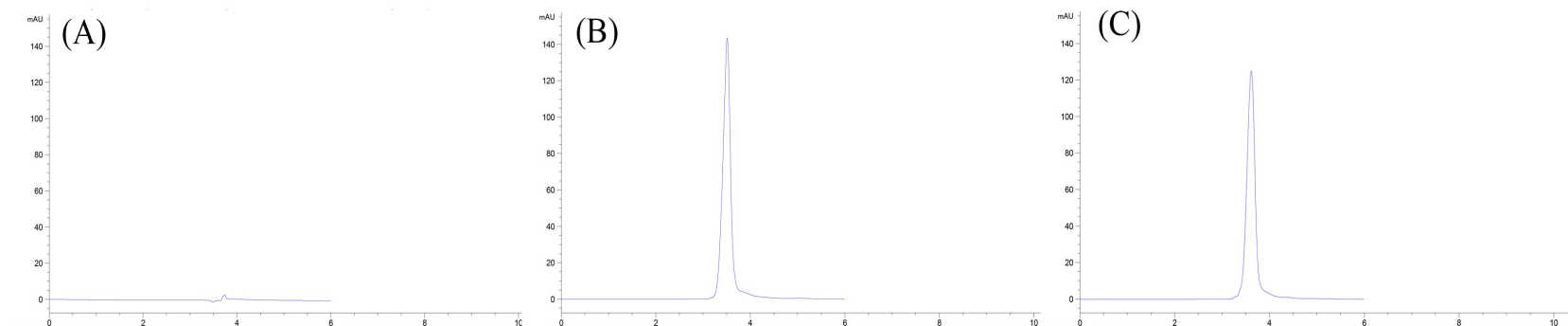
Image Number	ROI	Image Layer	Time Point (h)	Total Counts	Avg Counts	Stdev Counts	Min Counts	Max Counts
CLS20200814114410_004	ROI 1		0	8.24E+04	8.00E+02	3.62E+02	8.40E+01	1.30E+03
CLS20200814114410_004	ROI 2	Brain	12	6.01E+04	6.39E+02	3.12E+02	7.97E+01	1.12E+03
CLS20200814114410_004	ROI 3		24	4.60E+04	4.08E+02	2.41E+02	5.35E+01	7.91E+02
CLS20200814114410_004	ROI 4		0	4.59E+04	4.33E+02	1.88E+02	7.97E+01	8.68E+02
CLS20200814114410_004	ROI 5	Lung	12	5.82E+04	5.49E+02	1.95E+02	9.86E+01	1.04E+03
CLS20200814114410_004	ROI 6		24	4.86E+04	4.67E+02	1.35E+02	9.26E+01	8.08E+02
CLS20200814114410_004	ROI 7		0	1.62E+04	2.13E+02	9.37E+01	1.12E+02	4.19E+02
CLS20200814114410_004	ROI 8	Heart	12	1.36E+04	2.09E+02	5.86E+01	9.93E+01	3.26E+02
CLS20200814114410_004	ROI 9		24	1.14E+04	1.60E+02	5.31E+01	7.24E+01	3.13E+02
CLS20200814114410_004	ROI 10		0	5.83E+05	2.20E+03	9.41E+02	1.71E+02	3.52E+03
CLS20200814114410_004	ROI 11	Liver	12	7.70E+05	2.32E+03	1.64E+03	9.73E+01	5.24E+03
CLS20200814114410_004	ROI 12		24	8.11E+05	2.48E+03	1.69E+03	7.25E+01	8.79E+03
CLS20200814114410_004	ROI 13		0	4.12E+04	6.14E+02	3.71E+02	9.17E+01	1.14E+03
CLS20200814114410_004	ROI 14	Spleen	12	4.54E+04	6.49E+02	3.69E+02	1.13E+02	1.41E+03
CLS20200814114410_004	ROI 15		24	4.51E+04	7.51E+02	4.37E+02	1.00E+02	1.35E+03
CLS20200814114410_004	ROI 16		0	4.43E+05	3.17E+03	2.30E+03	1.00E+02	8.04E+03
CLS20200814114410_004	ROI 17	Stomach	12	4.79E+05	3.30E+03	2.97E+03	1.08E+02	8.69E+03
CLS20200814114410_004	ROI 18		24	3.97E+05	2.65E+03	2.65E+03	8.83E+01	7.77E+03
CLS20200814114410_004	ROI 19		0	4.47E+04	1.91E+02	1.53E+02	4.69E+01	5.86E+02
CLS20200814114410_004	ROI 20	Kidney	12	7.36E+04	2.80E+02	2.74E+02	6.01E+01	9.78E+02
CLS20200814114410_004	ROI 21		24	5.60E+04	2.09E+02	1.88E+02	5.26E+01	7.39E+02

**Table S-4 In Vitro Drug Release Study**

pH	Time point (min)	Cumulative drug release (%)			Mean	SD	
7.4	0.00	7.05	8.28	9.37	8.23	1.16	
	50.00	15.86	11.97	15.18	14.34	2.08	
	100.00	19.56	21.64	20.47	20.56	1.04	
	150.00	22.77	29.45	18.38	23.53	5.57	
	200.00	38.55	40.88	32.48	37.30	4.34	
	250.00	48.96	53.71	40.02	47.56	6.95	
	300.00	51.25	52.36	50.29	51.30	1.04	
	350.00	55.13	61.46	60.11	58.90	3.33	
	400.00	60.54	60.49	60.42	60.48	0.06	
	500.00	62.88	62.84	62.93	62.88	0.05	
	750.00	65.59	67.39	71.06	68.01	2.79	
	1000.00	71.55	73.14	72.94	72.54	0.87	
	1500.00	71.42	73.64	72.41	72.49	1.11	
	5.4	0.00	13.54	8.49	12.42	11.48	2.65
		50.00	14.88	22.84	22.93	20.22	4.62
100.00		22.59	20.39	21.06	21.35	1.13	
150.00		28.55	26.14	27.94	27.54	1.25	
200.00		33.42	31.64	32.41	32.49	0.89	
250.00		47.02	46.43	48.40	47.28	1.01	
300.00		50.46	56.53	51.94	52.98	3.17	
350.00		59.16	57.82	59.66	58.88	0.95	
400.00		60.84	63.51	60.33	61.56	1.71	
500.00		64.79	72.44	62.49	66.57	5.21	
750.00		72.61	70.37	71.13	71.37	1.14	
1000.00		71.89	69.14	72.98	71.34	1.98	
1500.00		71.67	71.66	72.49	71.94	0.48	



**Figure S-1 Standard Curve of Paclitaxel**



**Figure S-2 HPLC Chromatograms of Eu-MOFs (A), Paclitaxel Standard (B) and Eu-MOFs/PTX (C)**