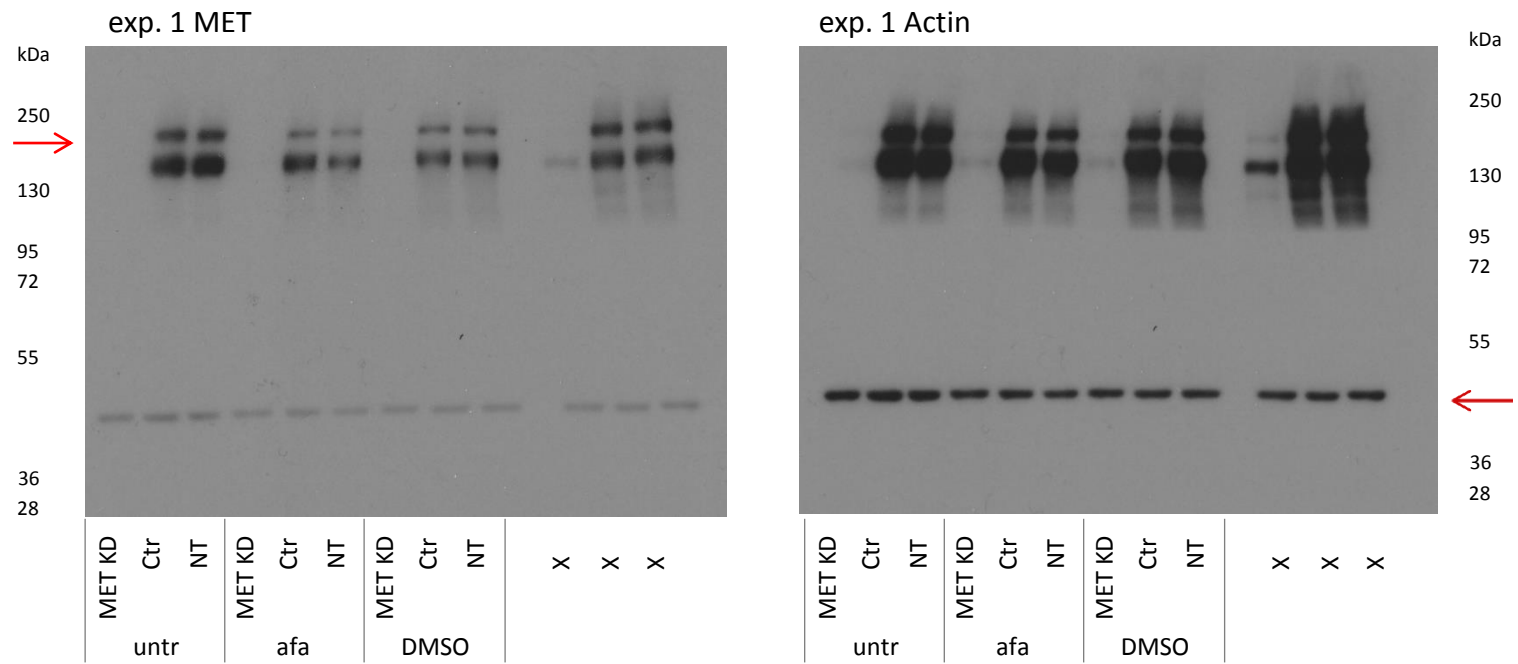


Figure 1a,c



- All membranes were cut between 95 and 72 kDa
- The upper parts were stained with MET, pMET, EGFR or pEGFR antibodies
- The lower parts were stained with pMAPK and Tubulin or pAKT and Actin antibodies
- Different exposure times were analyzed for different proteins. For each protein, the images of the evaluated exposure times are depicted.

Figure 1a,c

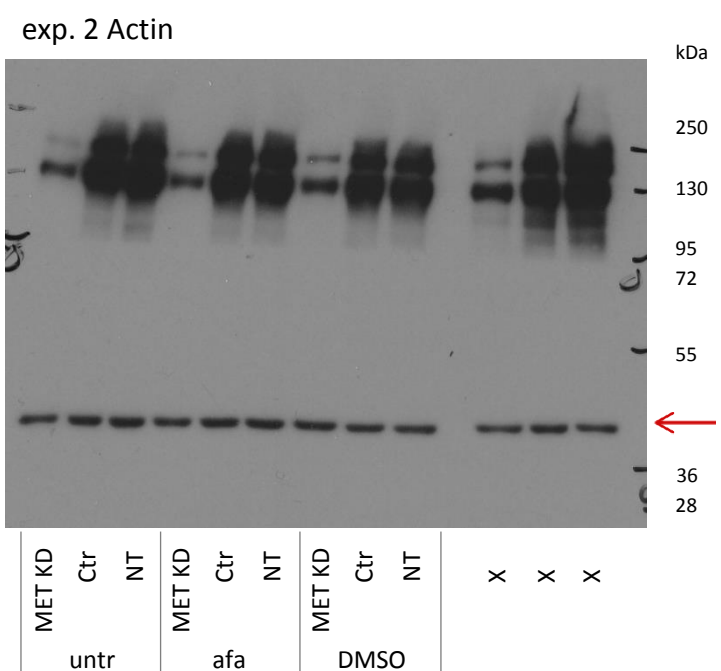
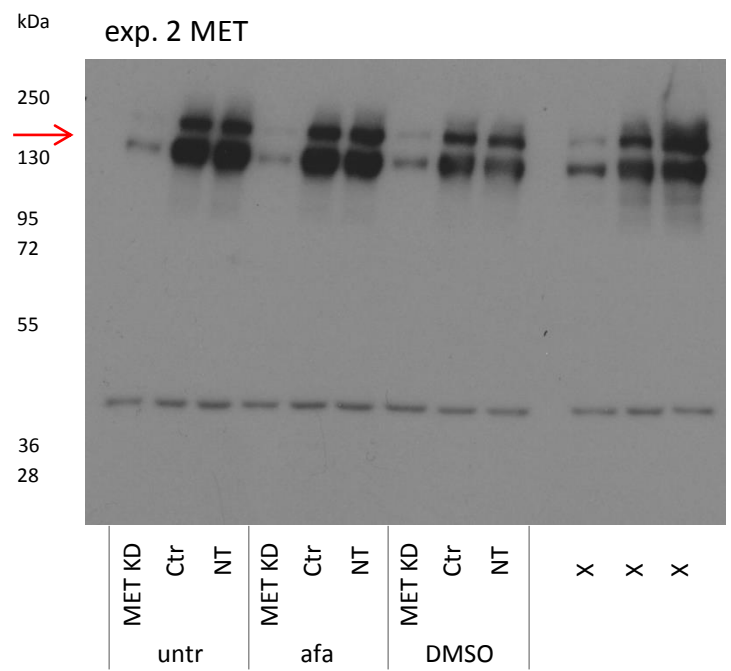


Figure 1a,c

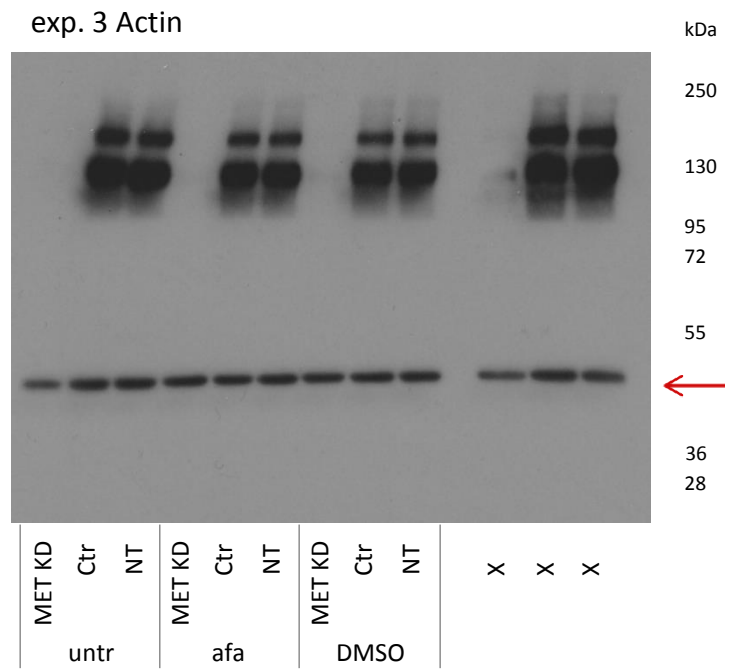
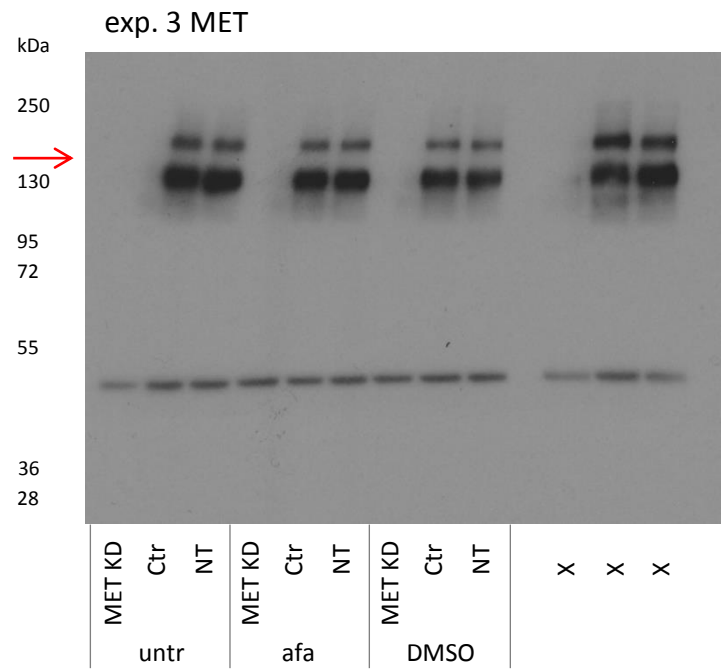


Figure 1b,d

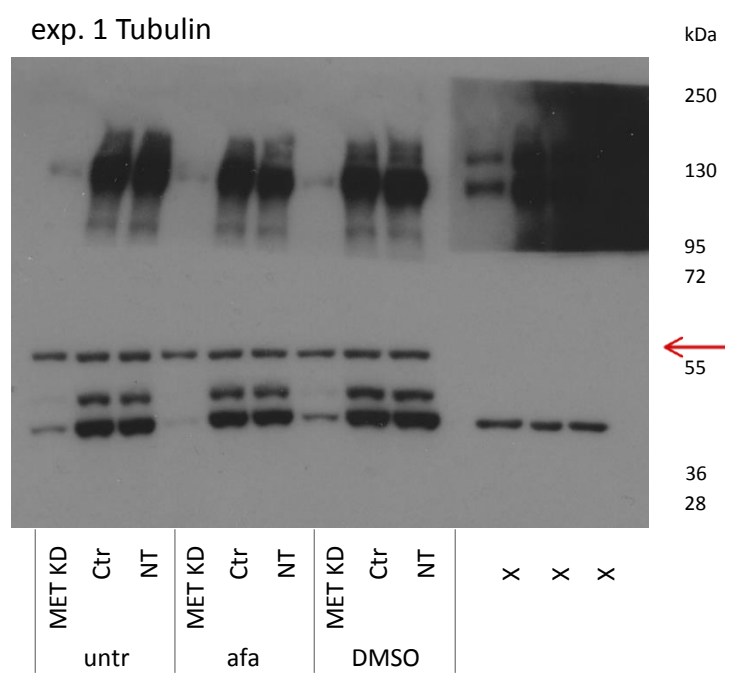
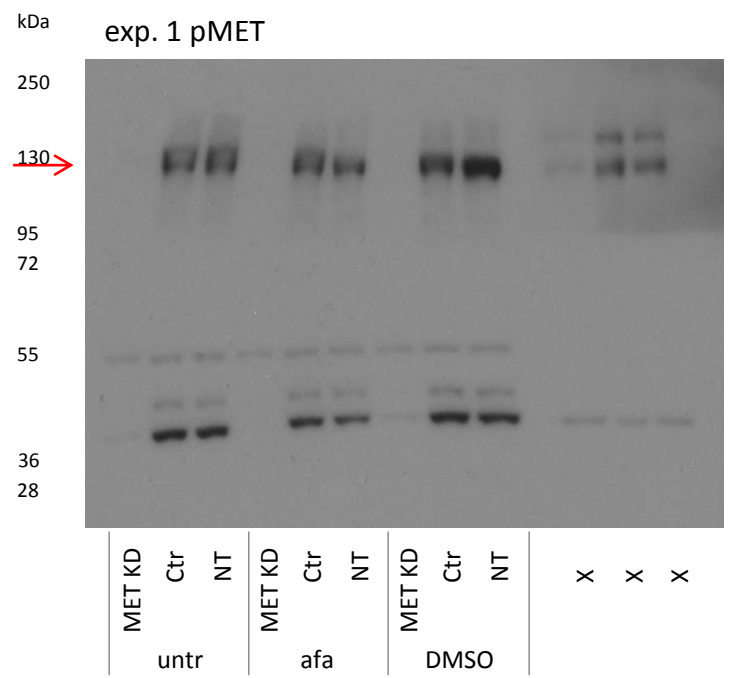


Figure 1b,d

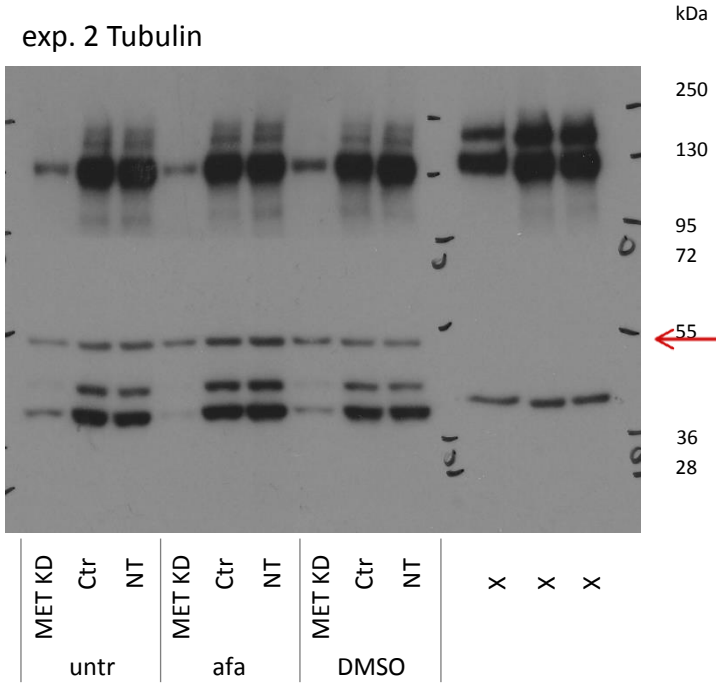
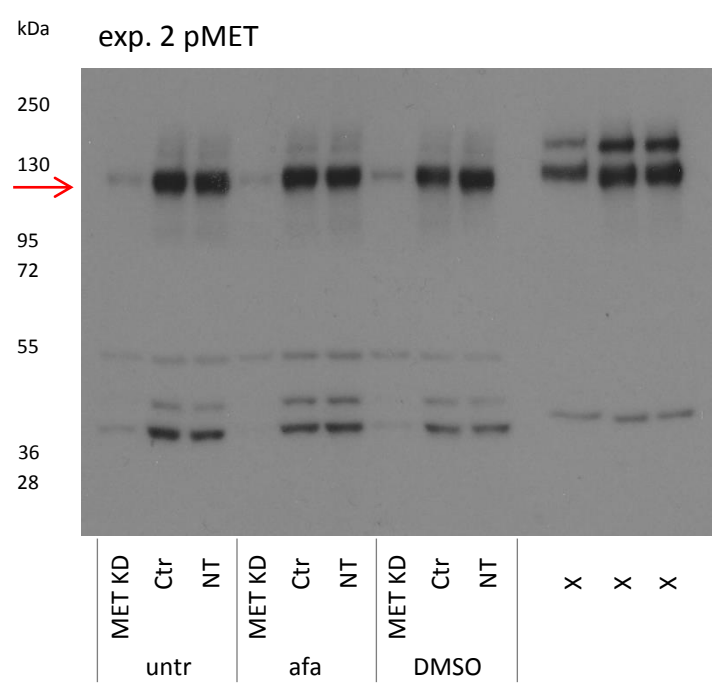


Figure 1b,d

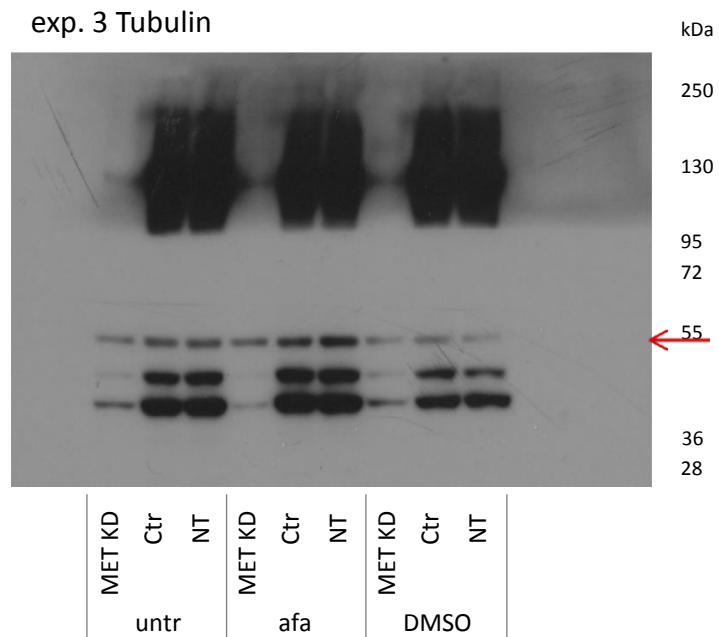
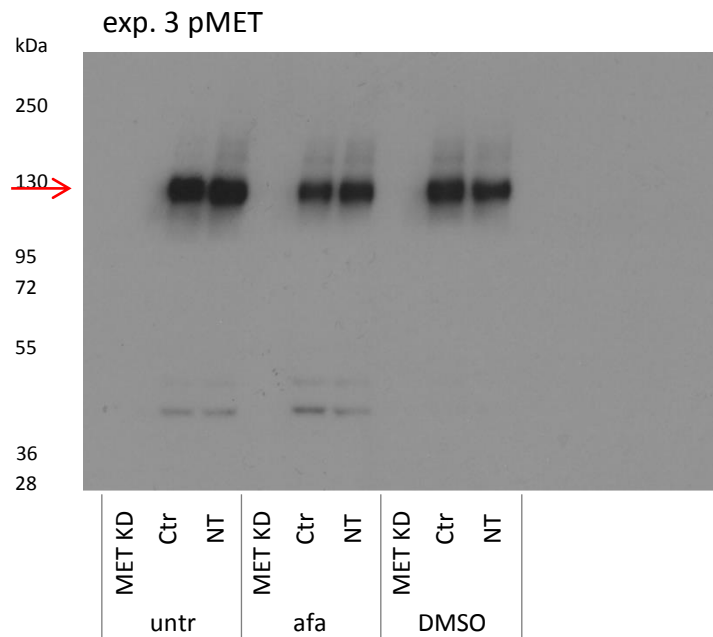


Figure 2a,c

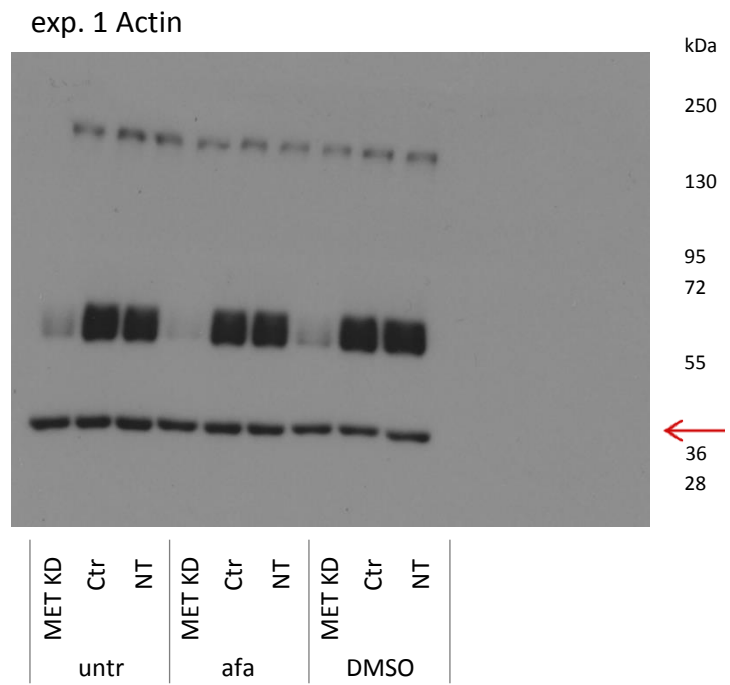
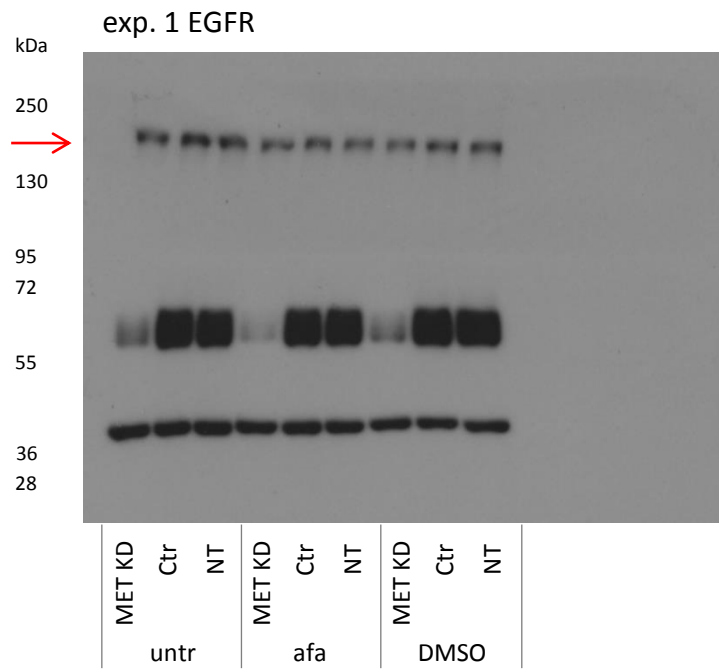
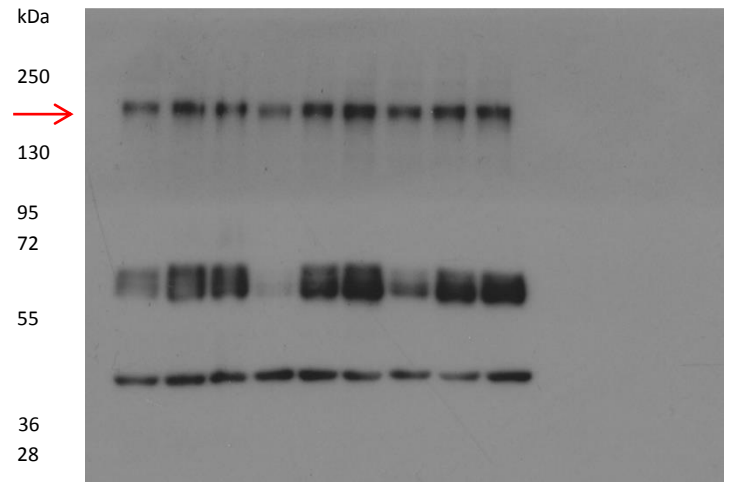


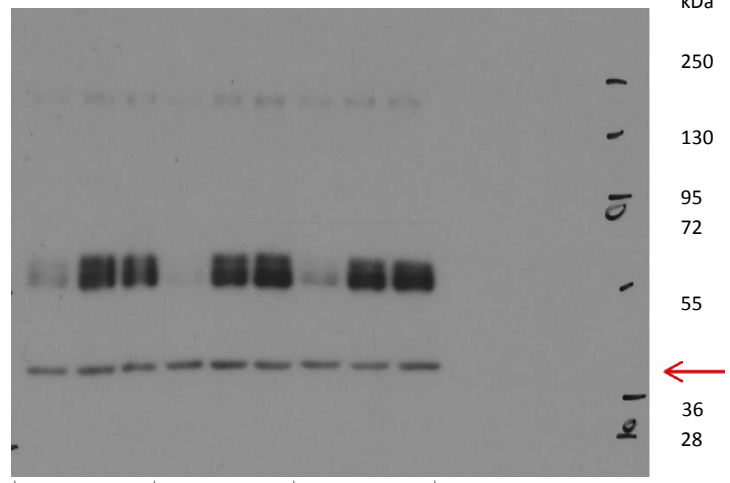
Figure 2a,c

exp. 2 EGFR



MET KD	Ctr	NT	MET KD	Ctr	NT	MET KD	Ctr	NT
untr			afa			DMSO		

exp. 2 Actin



MET KD	Ctr	NT	MET KD	Ctr	NT	MET KD	Ctr	NT
untr			afa			DMSO		

Figure 2a,c

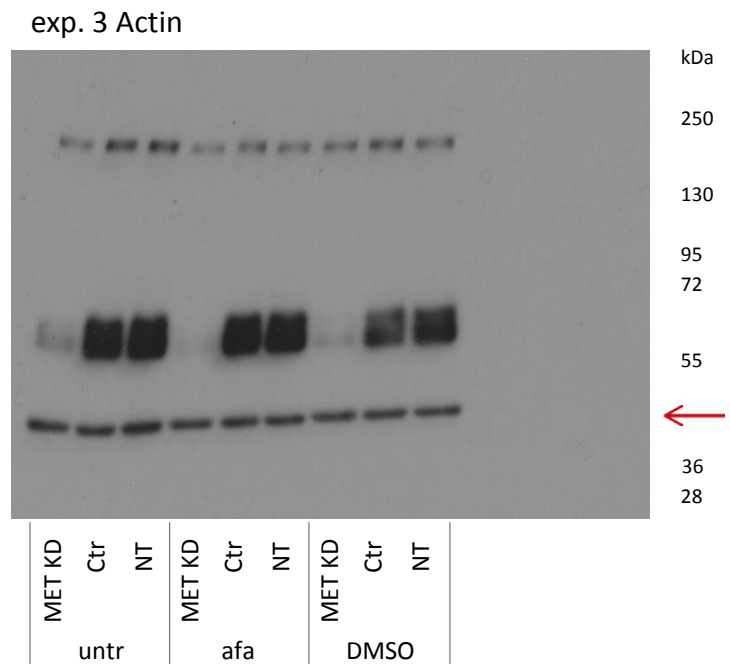
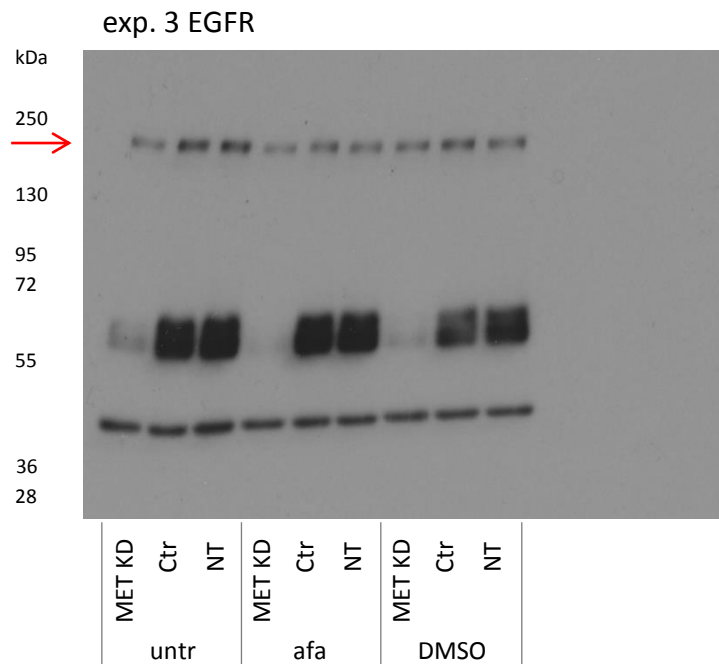
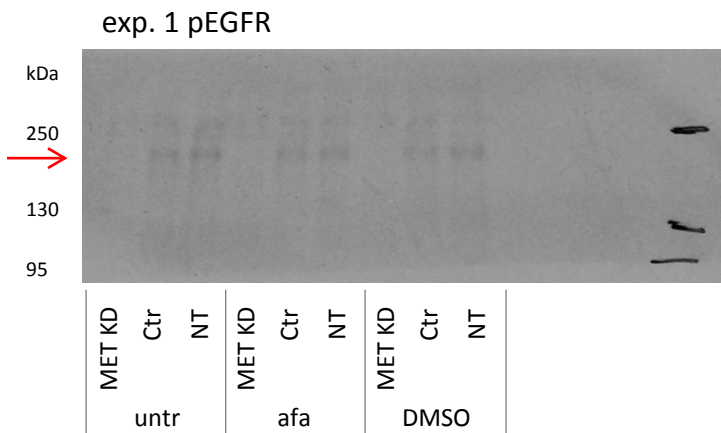
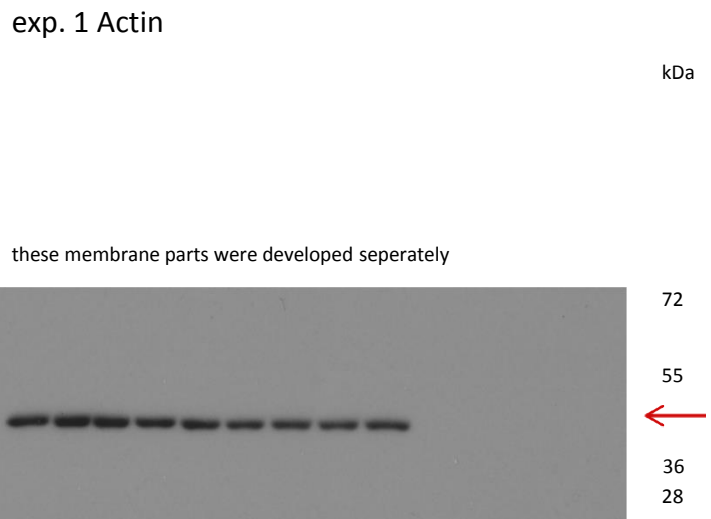


Figure 2b,d



these membrane parts were developed seperately



these membrane parts were developed seperately

Figure 2b,d

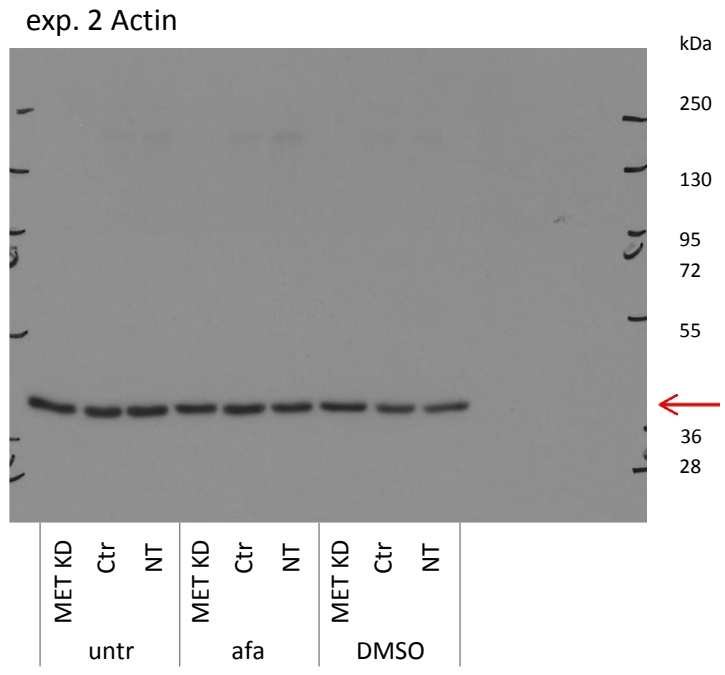
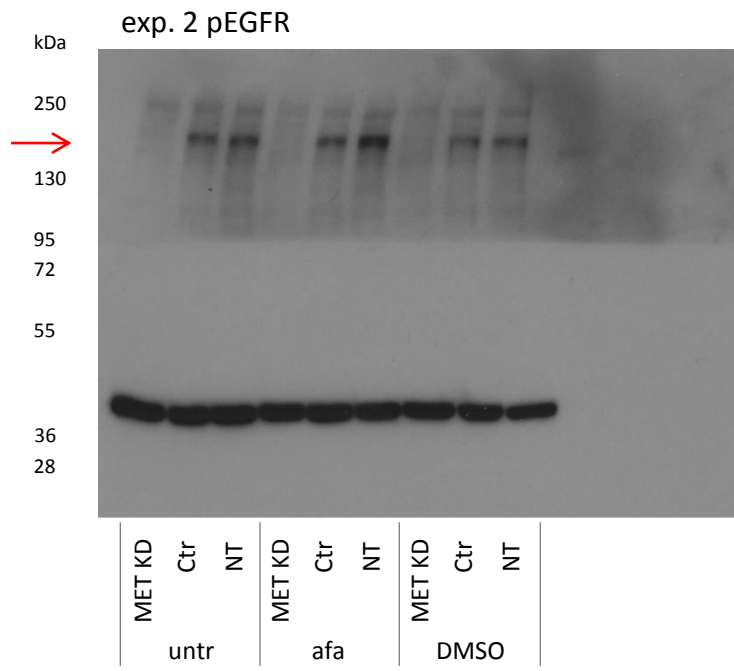


Figure 2b,d

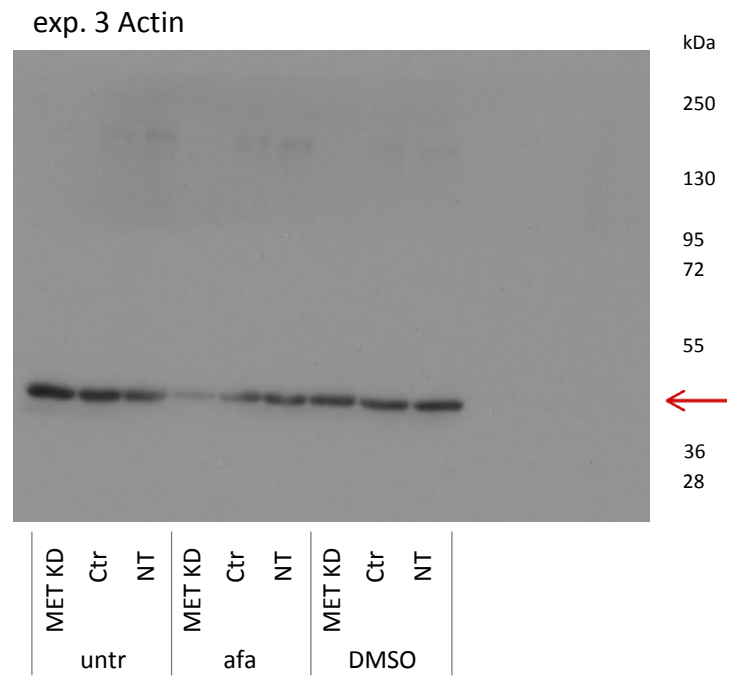
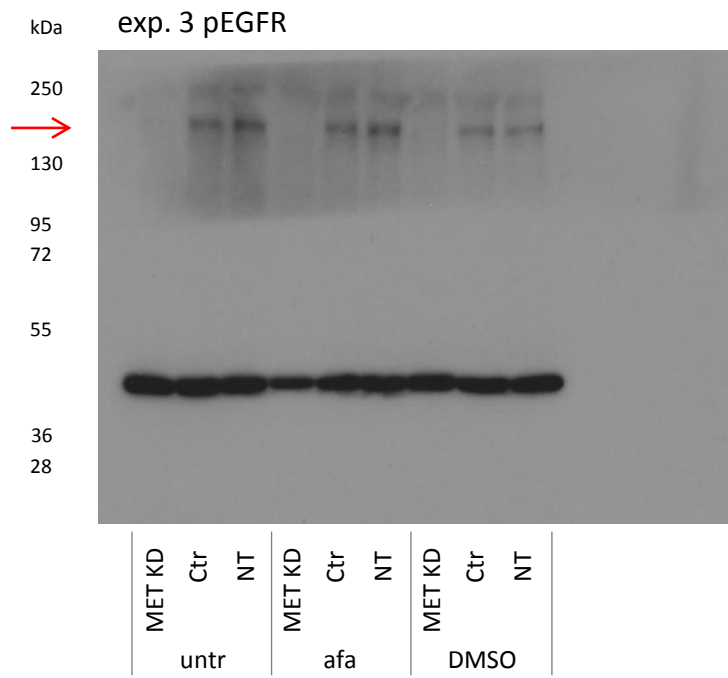


Figure 3a,c,e

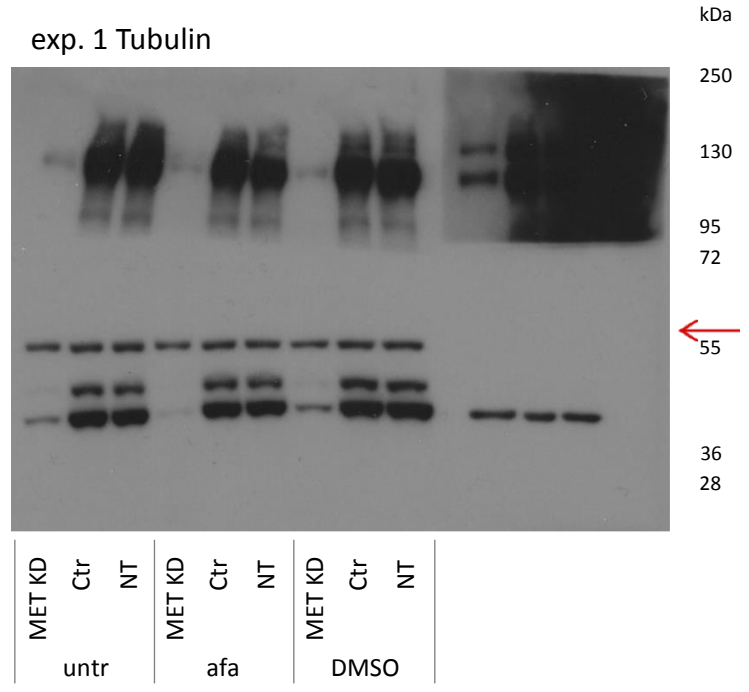
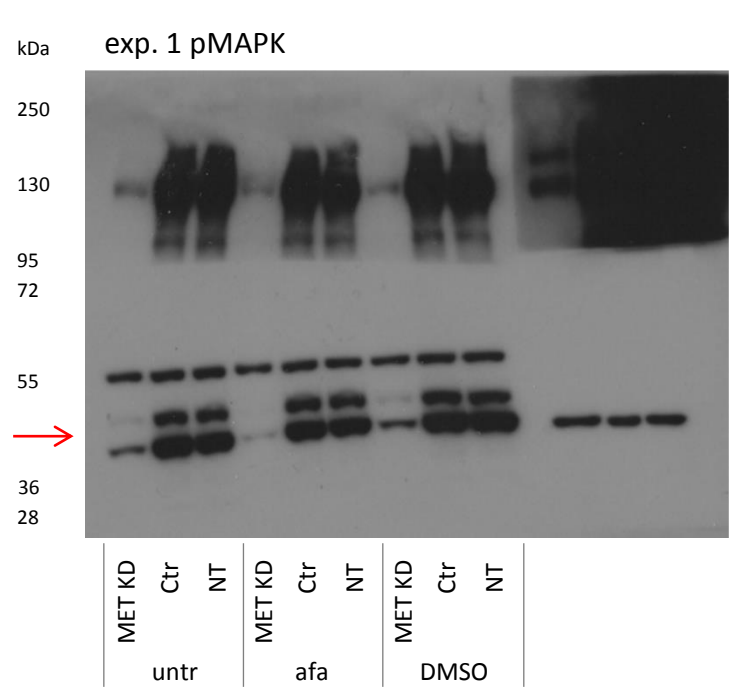


Figure 3a,c,e

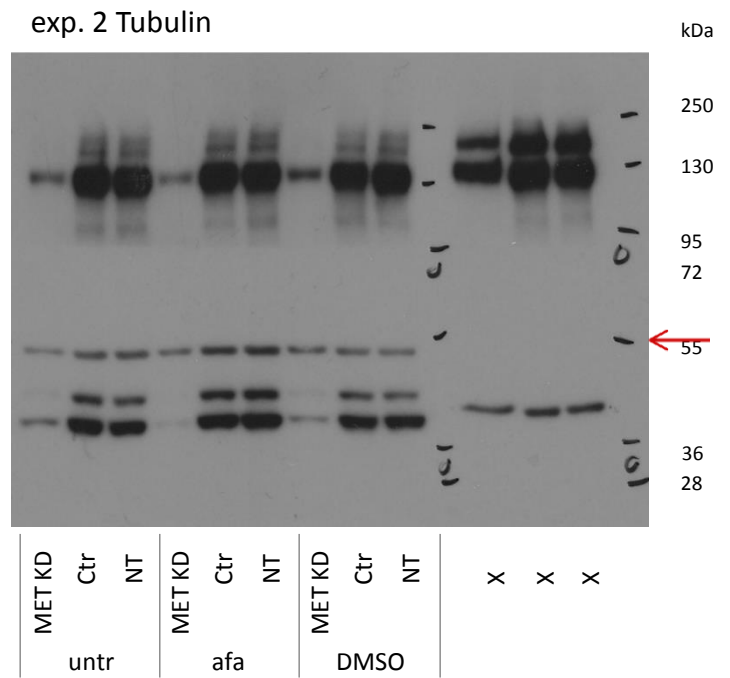
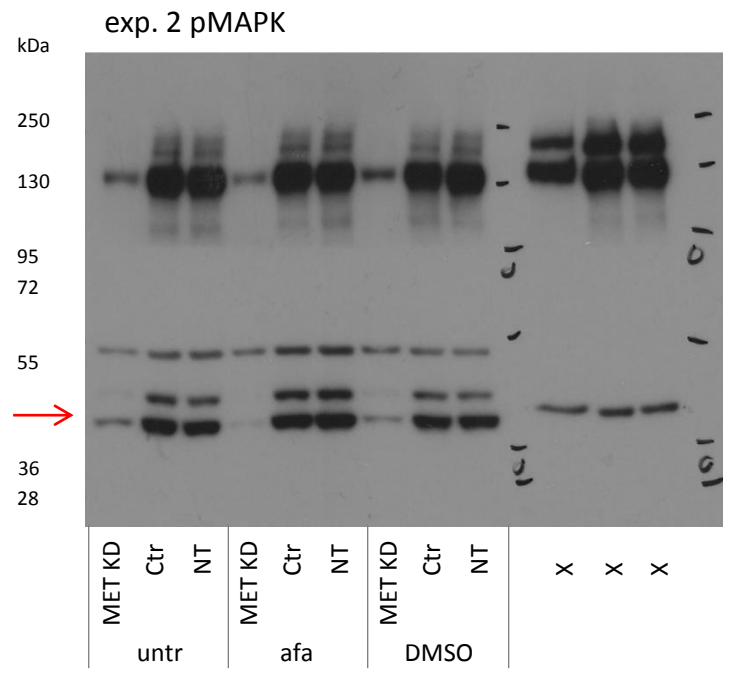


Figure 3a,c,e

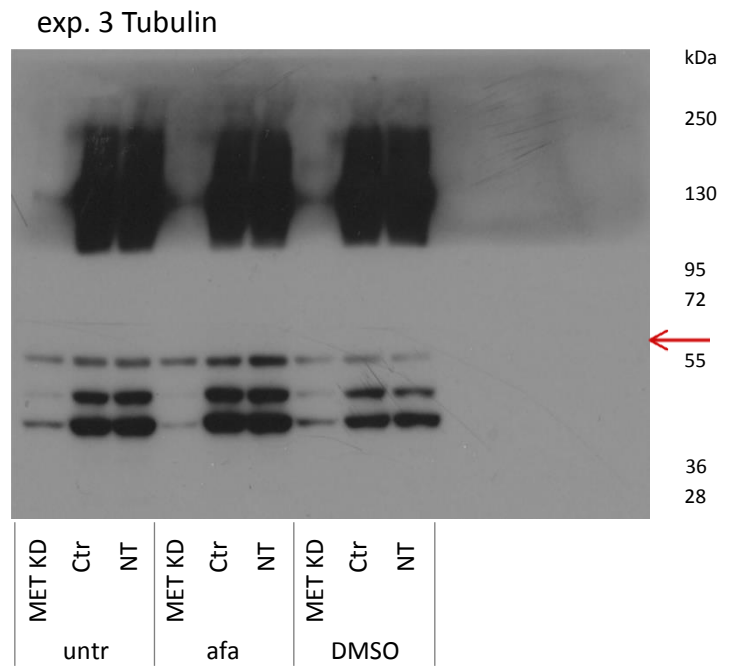
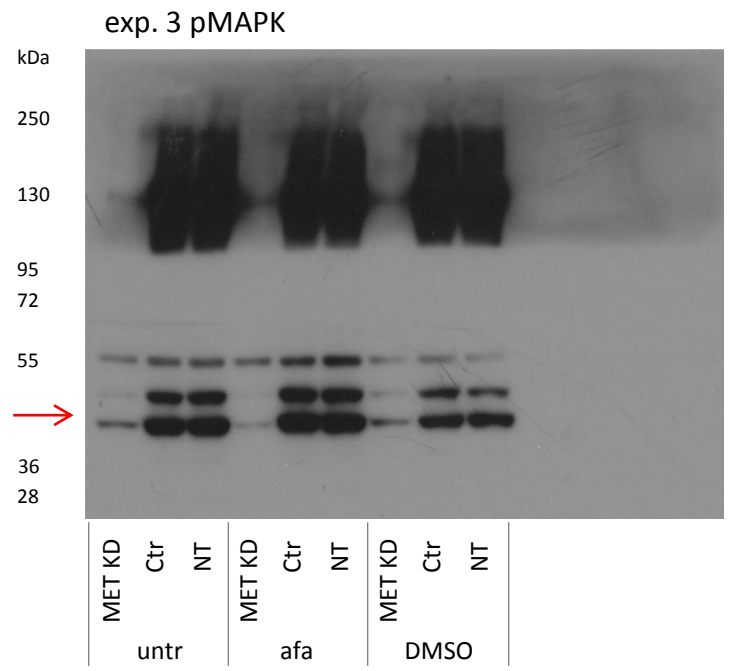


Figure 3b,d,f

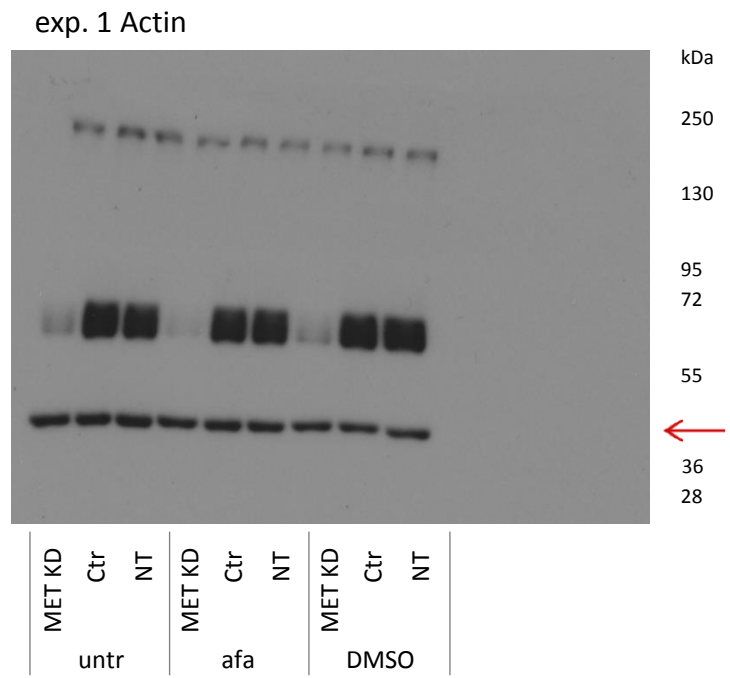
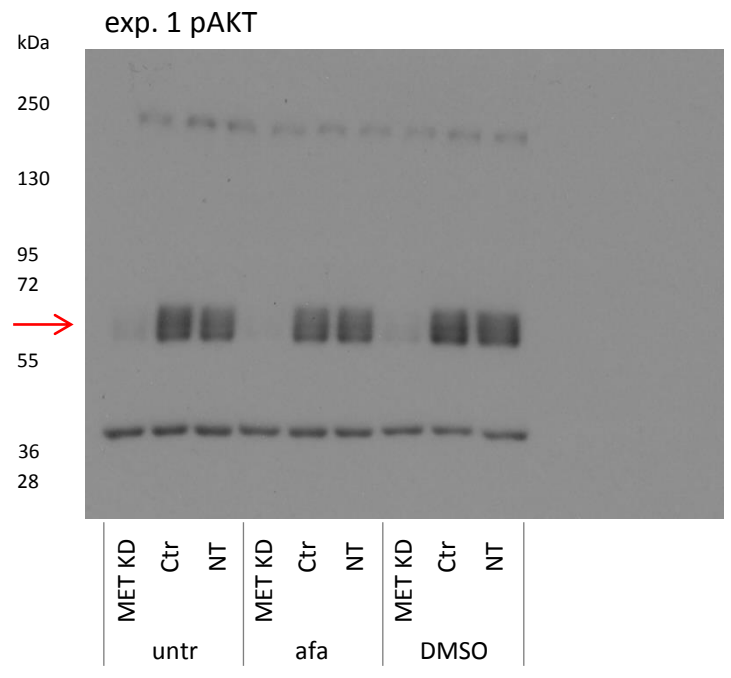


Figure 3b,d,f

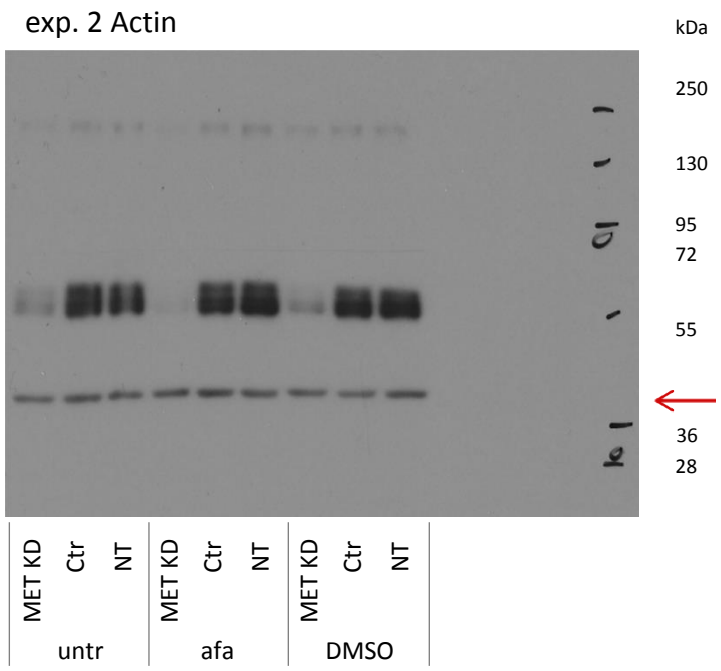
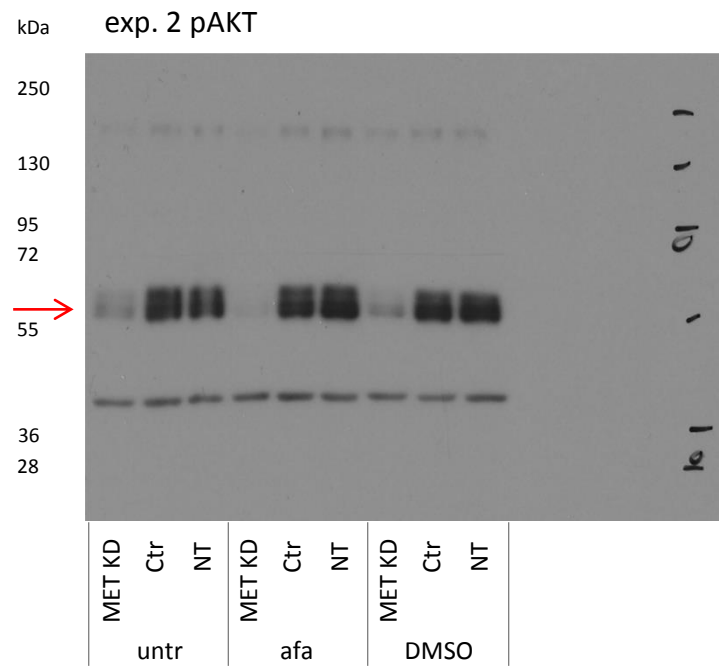


Figure 3b,d,f

