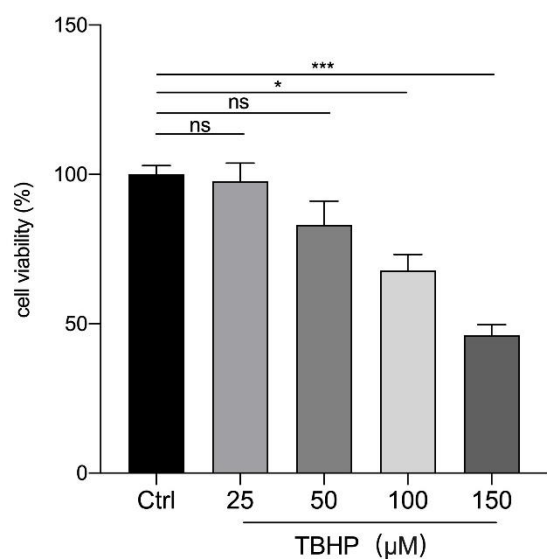


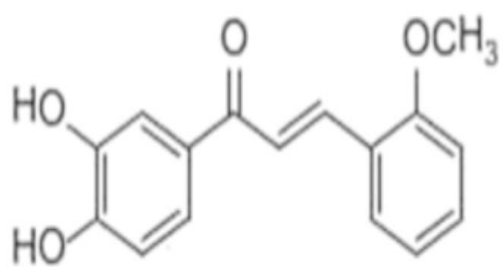
Supplementary Table S1. Related primers of target genes in quantitative real-time PCR.

Mouse primers	
IL-6-sense	5'-AAGTCCGGAGAGGAGACTTC-3'
IL-6-antisense	5'-TGGATGGTCTTGGTCCTTAG-3'
TNF- α -sense	5'-CCCTCACACTCAGATCATCTTCT-3'
TNF- α -antisense	5'-GCTACGACGTGGGCTACAG-3'
ICAM-1-sense	5'-GCCTTGGTAGAGGTGACTGAG-3'
ICAM-1-antisense	5'-GACCGGAGCTGAAAAGTTGTA-3'
VCAM-1-sense	5'-TGCCGAGCTAAATTACACATTG-3'
VCAM-1-antisense	5'-CCTTGTGGAGGGATGTACAGA-3'
Rhesus monkey primers	
IL-6-sense	5'-GAGTAGTGAGGAGCAAGCCA-3'
IL-6-antisense	5'-ATTTGTGGTTGGTTCAGGGGT-3'
TNF- α -sense	5'-CCCTCACACTCAGATCATCTTCT-3'
TNF- α -antisense	5'-GCTACGACGTGGGCTACAG-3'
ICAM-1-sense	5'-GGGACCGAGGTGATAGTGGA-3'
ICAM-1-antisense	5'-CCCGGACAATCCTTCTCGTC-3'
VCAM-1-sense	5'-CAGCACCTTTCTGGGAATGC-3'
VCAM-1-antisense	5'-GGGGACTCACAGCCCATAAC-3'

Supplementary Figure S2. Cell viability of RF/6A cells after TBHP treatment. The toxicity of TBHP in RF/6A cells was measured 24 h after TBHP treatment using the MTS assay.



Supplementary Figure S3. The chemical structure of L2H17.



L2H17