

Supplementary Data

Interaction of S-layer proteins of *Lactobacillus kefir* with model membranes and cells

A. Hollmann^{1,2,3*}, L. Delfederico¹, N.C. Santos³, E. A. Disalvo², and L. Semorile¹

¹Laboratory of Molecular Microbiology, Institute of Basic and Applied Microbiology, National University of Quilmes, B1876BXD Bernal, Argentina.

²Laboratory of Biointerfaces and Biomimetic Systems- CITSE – National University of Santiago del Estero, Santiago del Estero and CONICET, Argentina.

³Instituto de Medicina Molecular, Faculdade de Medicina, Universidade de Lisboa, Lisbon, Portugal.

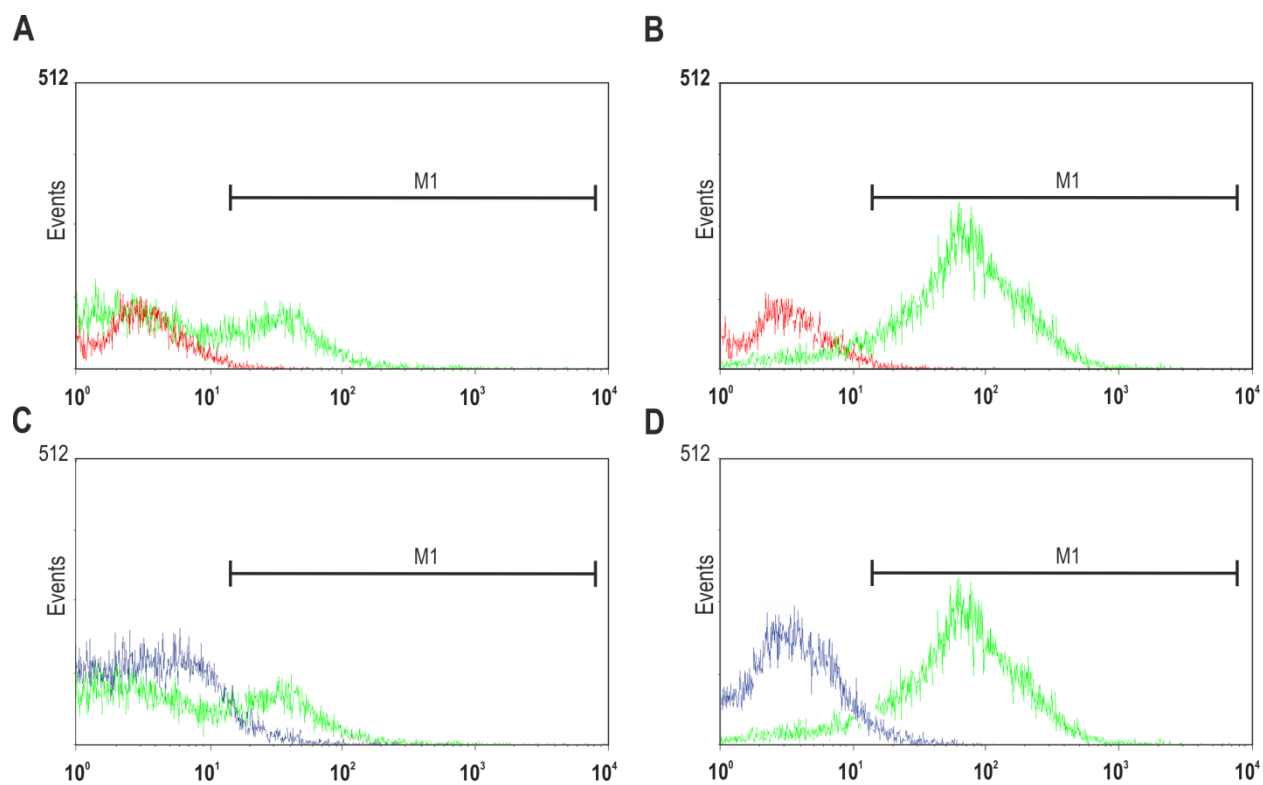


Figure S1. Flow cytometry histograms of Caco-2 cells before (red line) and after 30 min of (green line) incubation at 37°C with control (**A**) and S-layer coated liposomes (**B**). Flow cytometry histograms of Caco-2 cells upon 30 min incubation at 4°C (blue line) and 37°C (green line) with control (**C**) and S-layer coated liposomes (**D**). The marker M1 defines the region of calcein fluorescence. Data represent the averages of the mean fluorescent signals for 20 000 cells made by triplicate.