

## Supplemental Information

### **Grooming of Fouling-Release Coatings to Control Marine Fouling and Determining how Grooming Affects the Surface**

Joseph Dahlgren,<sup>a</sup> Lauren Foy,<sup>b</sup> Kelli Hunsucker,<sup>b</sup> Harrison Gardner,<sup>b</sup> Geoff Swain,<sup>b</sup> Shane J. Stafslie,<sup>a</sup> Lyndsi Vanderwal,<sup>a</sup> James Bahr,<sup>a</sup> Dean C. Webster<sup>a\*</sup>

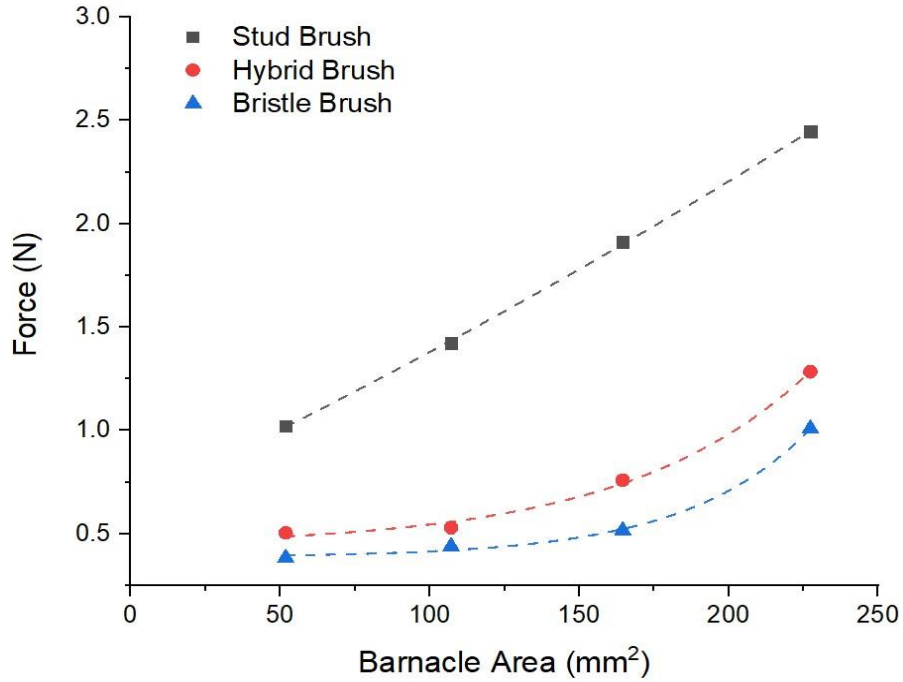
<sup>a</sup> Department of Coatings and Polymeric Materials, North Dakota State University, Fargo, ND 58108, USA

<sup>b</sup> Center for Corrosion and Biofouling Control, Florida Institute of Technology, Melbourne, FL 32901, USA

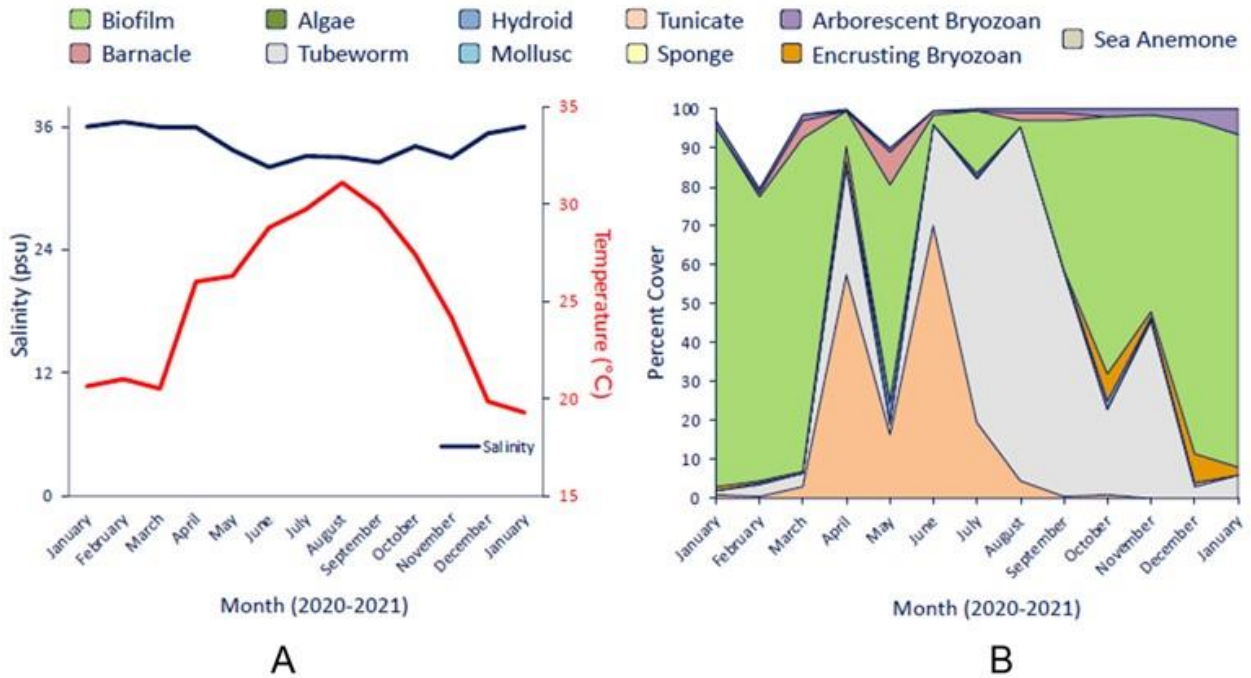
\*Corresponding author: [dean.webster@ndsu.edu](mailto:dean.webster@ndsu.edu)

Number of pages: 10

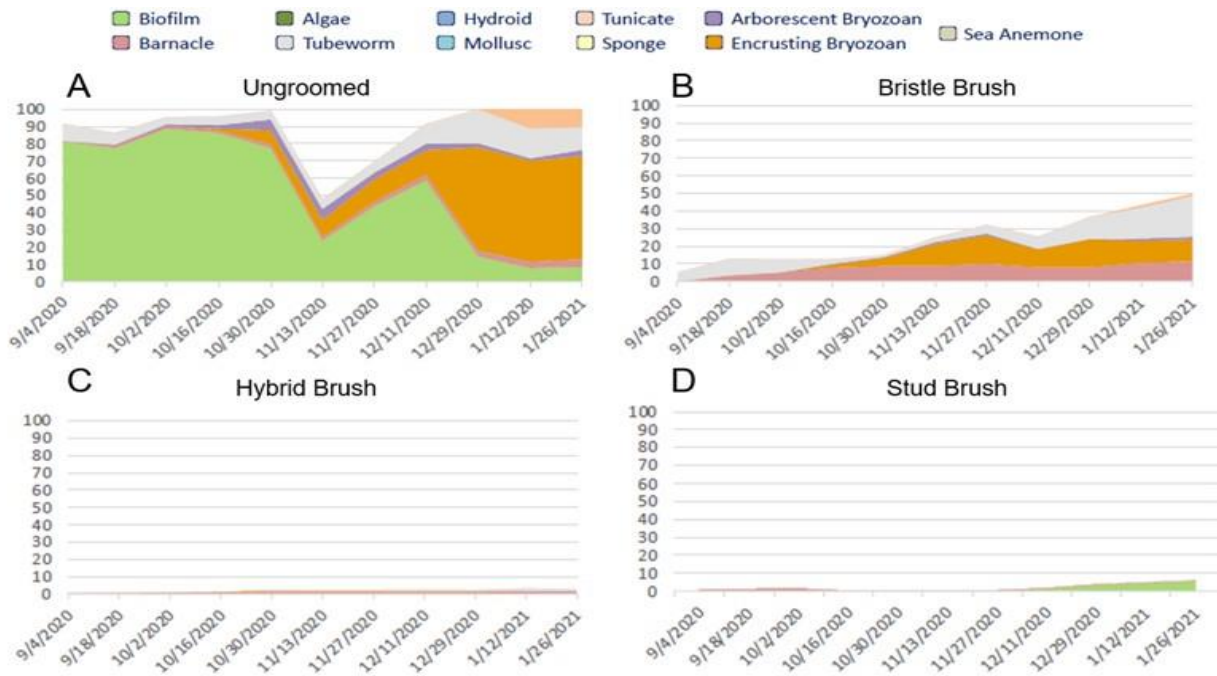
Number of figures: 18



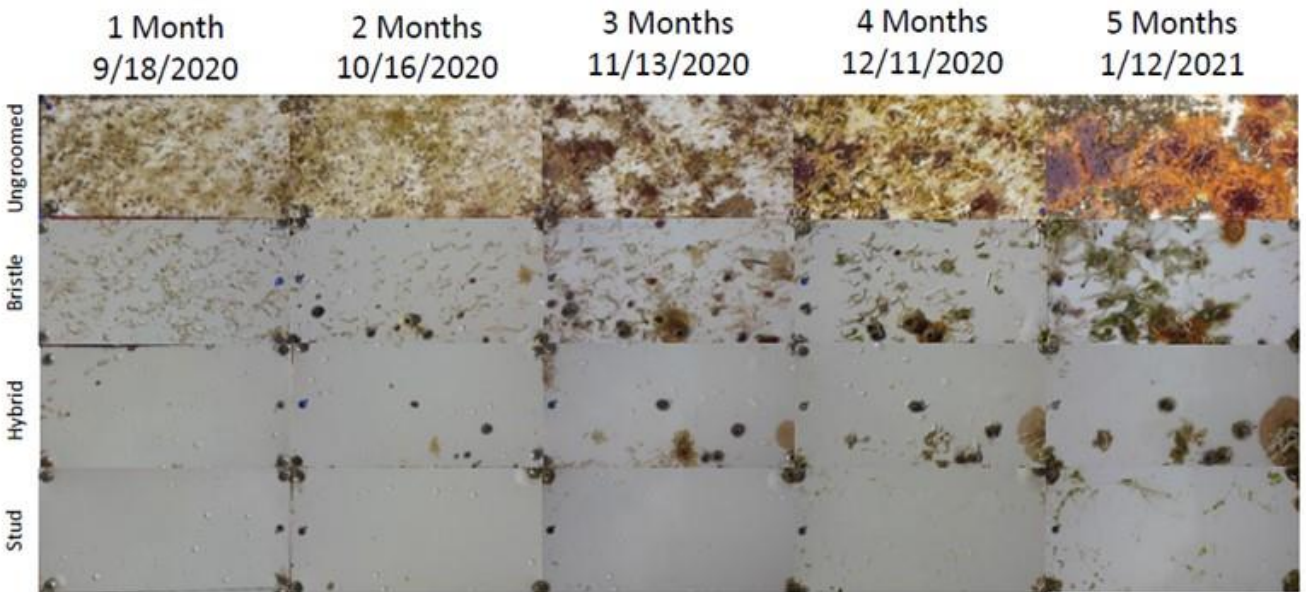
**Figure S1.** Forces imparted to 3D printed barnacles of different base areas by three brush designs.



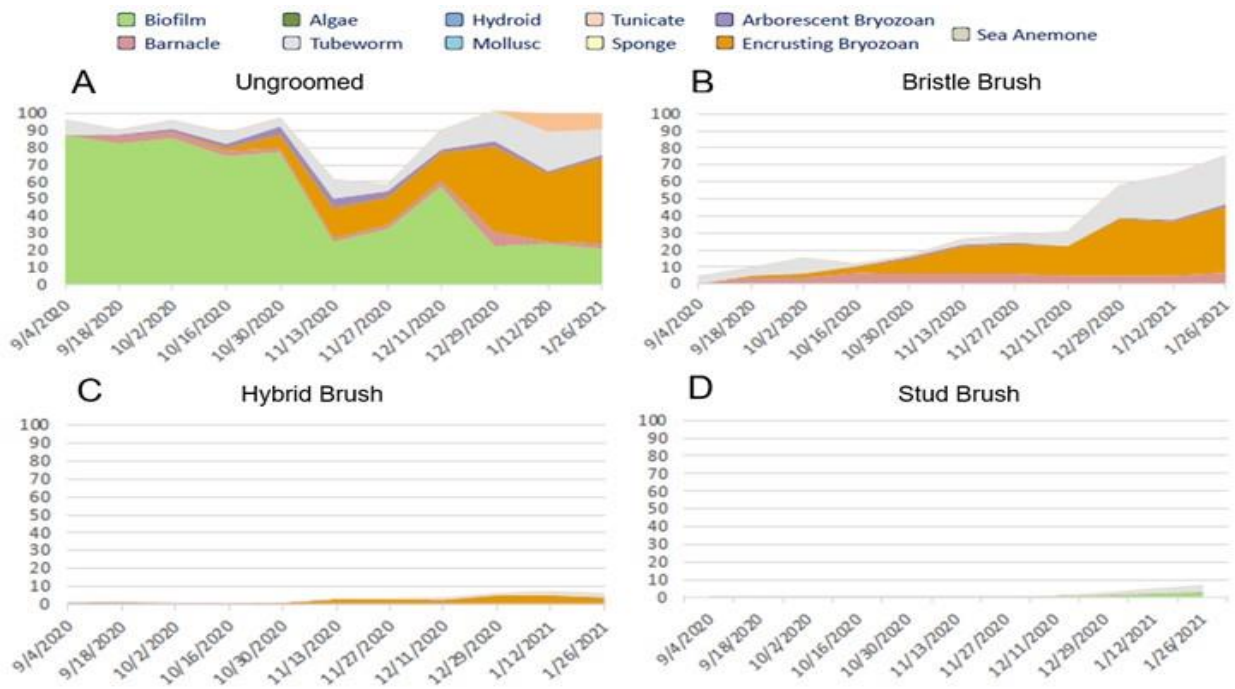
**Figure S2.** Water Quality (A) and Biofouling Recruitment (B) at Port Canaveral, Florida for the whole year of 2020 and January 2021.



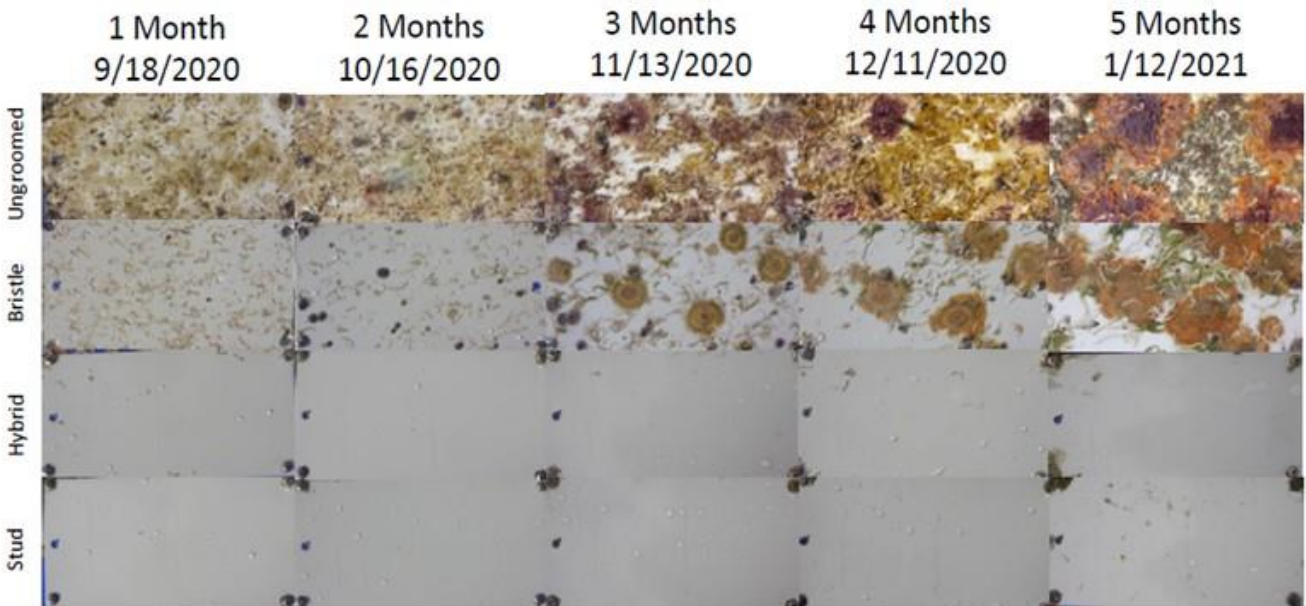
**Figure S3.** Fouling Coverage for A4-20 Panels. Ungroomed/Control (A); Bristle Brush (B); Hybrid Brush (C); and Stud Brush (D).



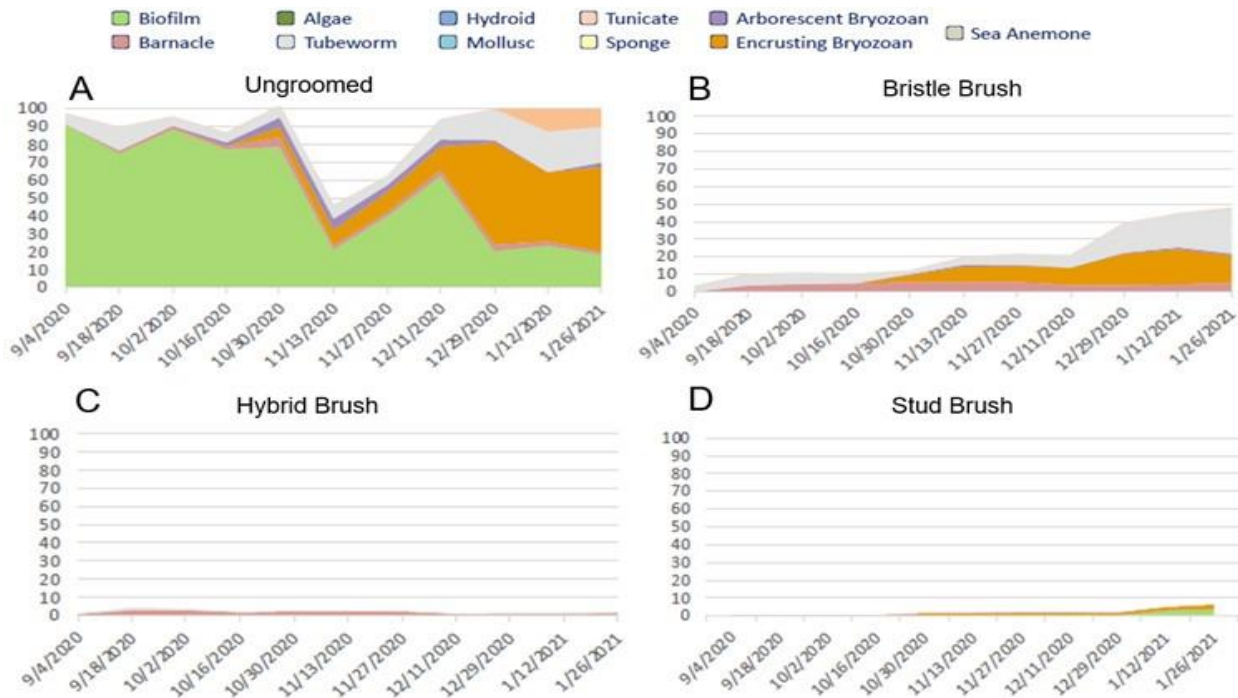
**Figure S4.** Visual Assessment of fouling by month for A4-20 Panels.



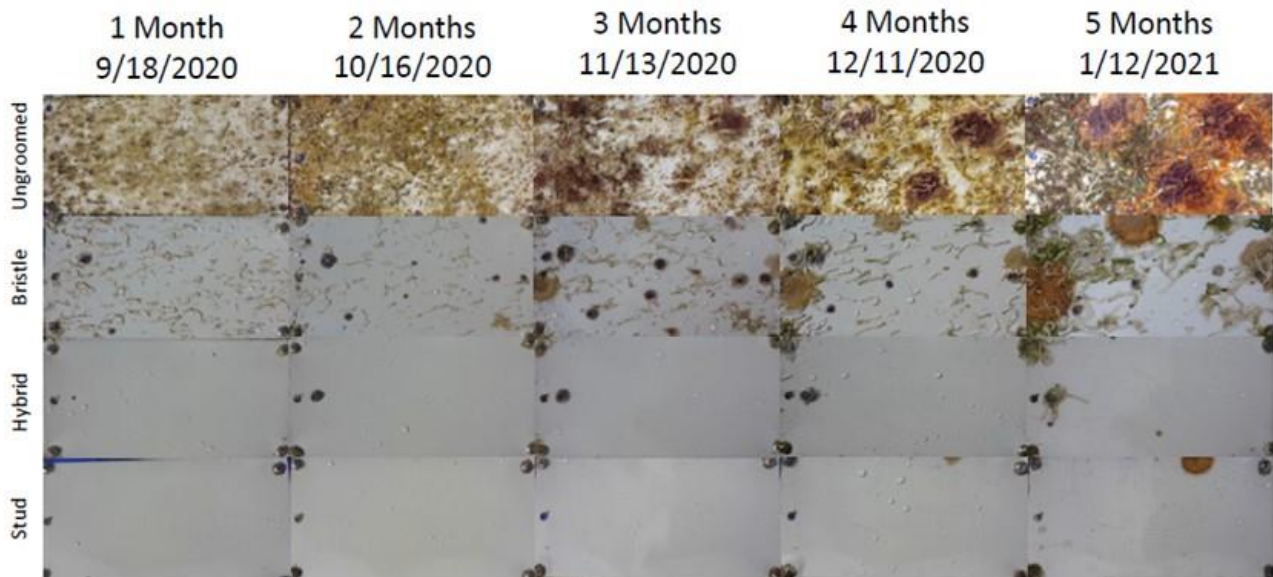
**Figure S5.** Fouling Coverage for A4-SO-0021 Panels. Ungroomed/Control (A); Bristle Brush (B); Hybrid Brush (C); and Stud Brush (D)



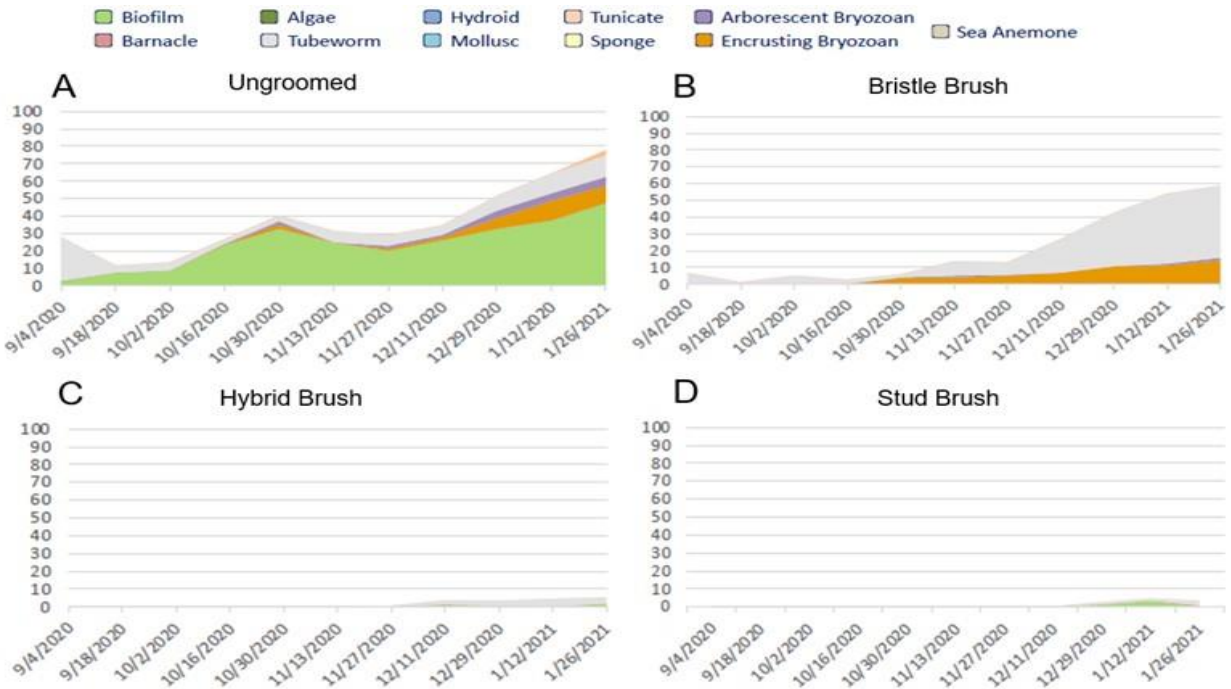
**Figure S6.** Visual Assessment of fouling by month for A4-SO-0021 Panels.



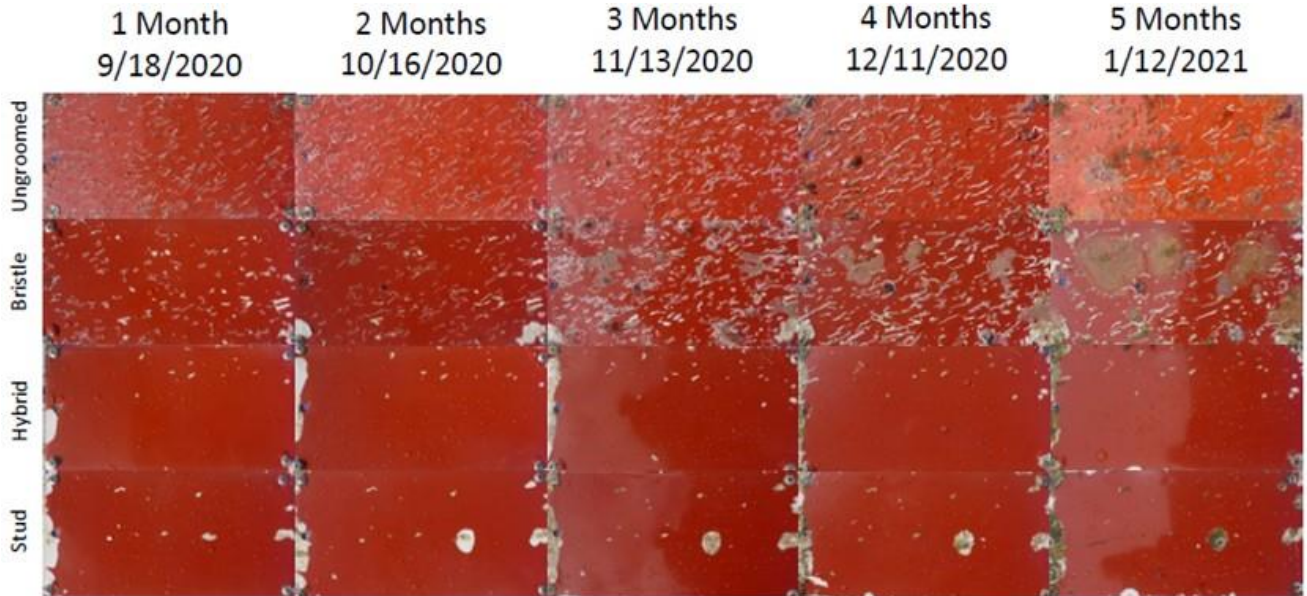
**Figure S7.** Fouling Coverage for A4-SMAA-54 Panels. Ungroomed/Control (A); Bristle Brush (B); Hybrid Brush (C); and Stud Brush (D).



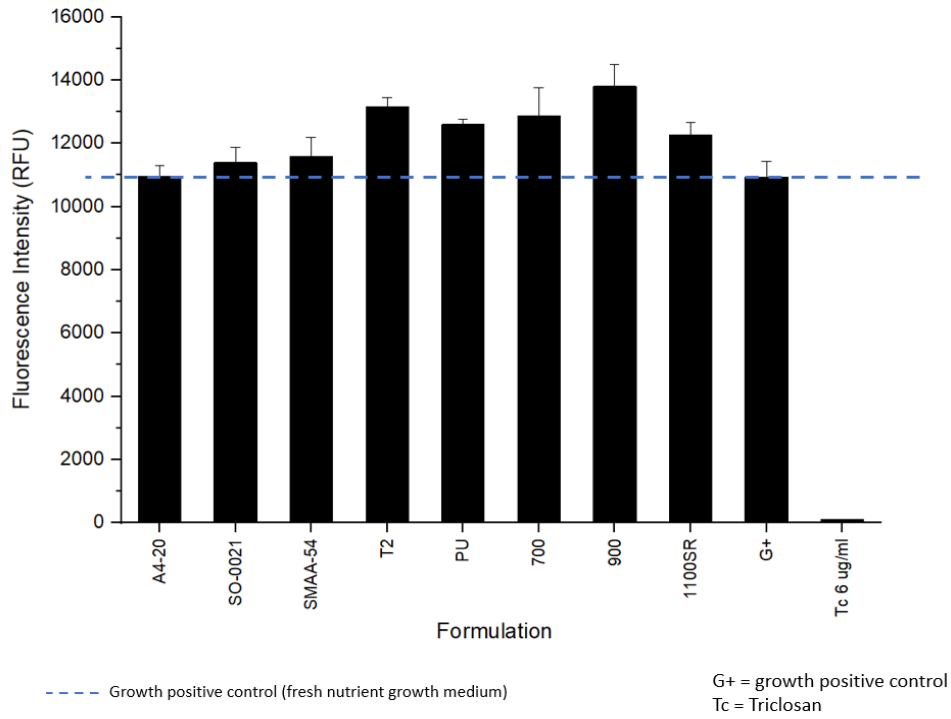
**Figure S8.** Visual Assessment of fouling by month for A4-SMAA-54 Panels.



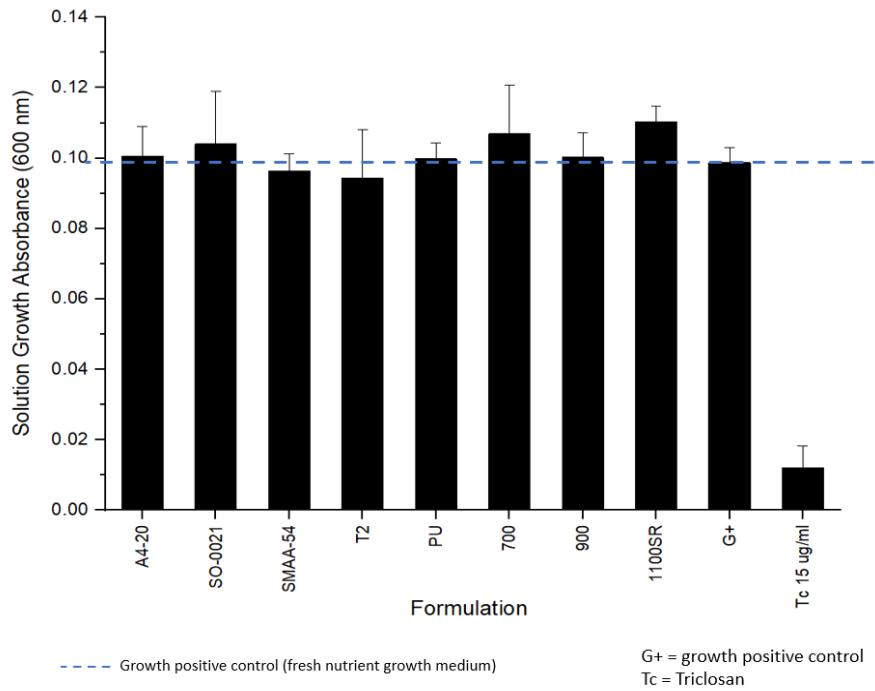
**Figure S9.** Fouling Coverage for Intersleek® 1100SR Panels. Ungroomed/Control (A); Bristle Brush (B); Hybrid Brush (C); and Stud Brush (D).



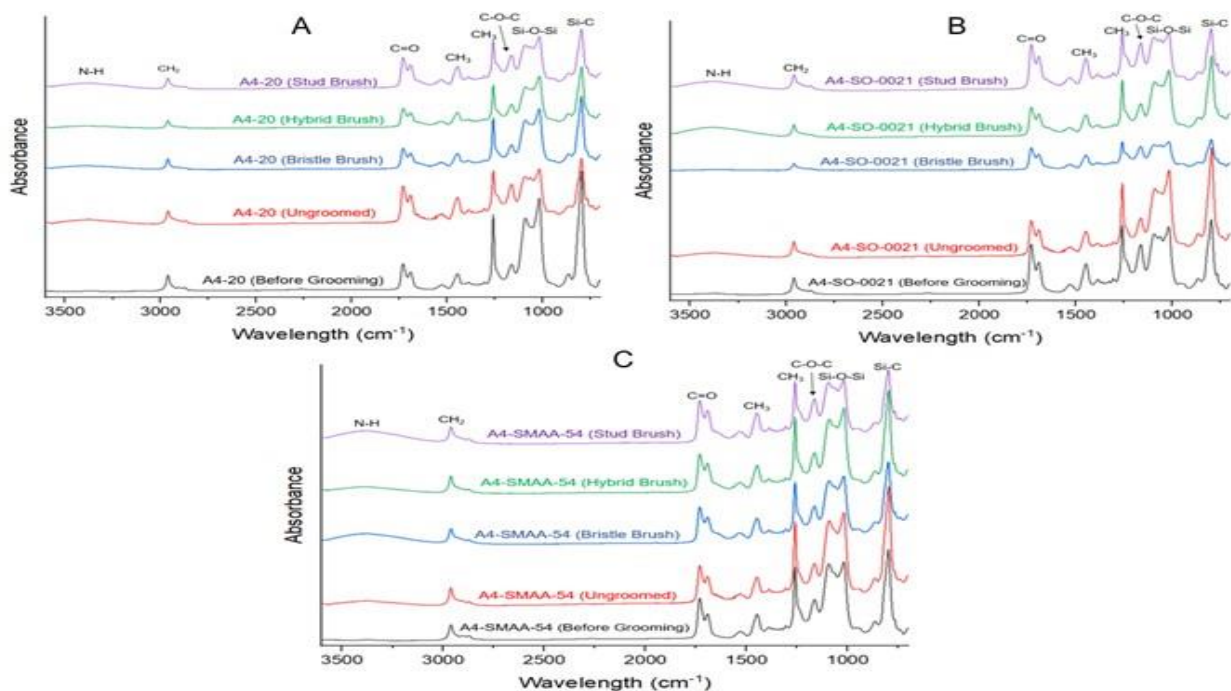
**Figure S10.** Visual Assessment of fouling by month for IS 1100SR Panels.



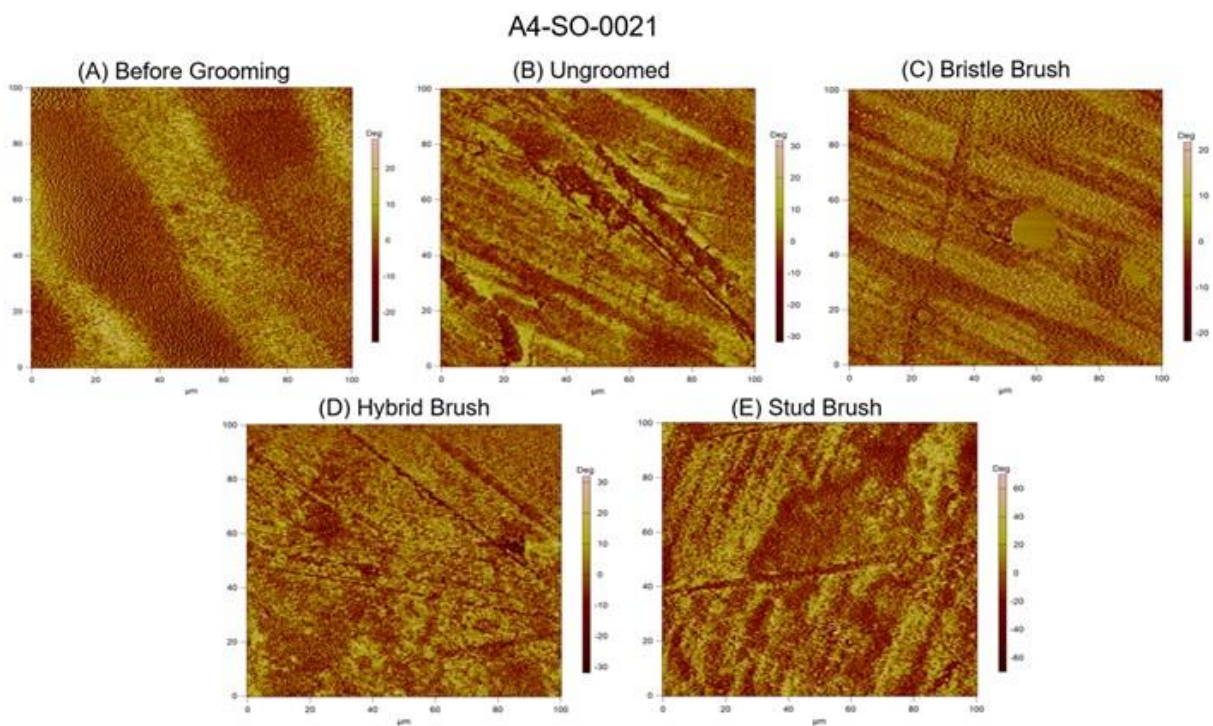
**Figure S11.** Assessment of leachate toxicity of *N. incerta*.



**Figure S12.** Assessment of leachate toxicity of *C. lytica*.

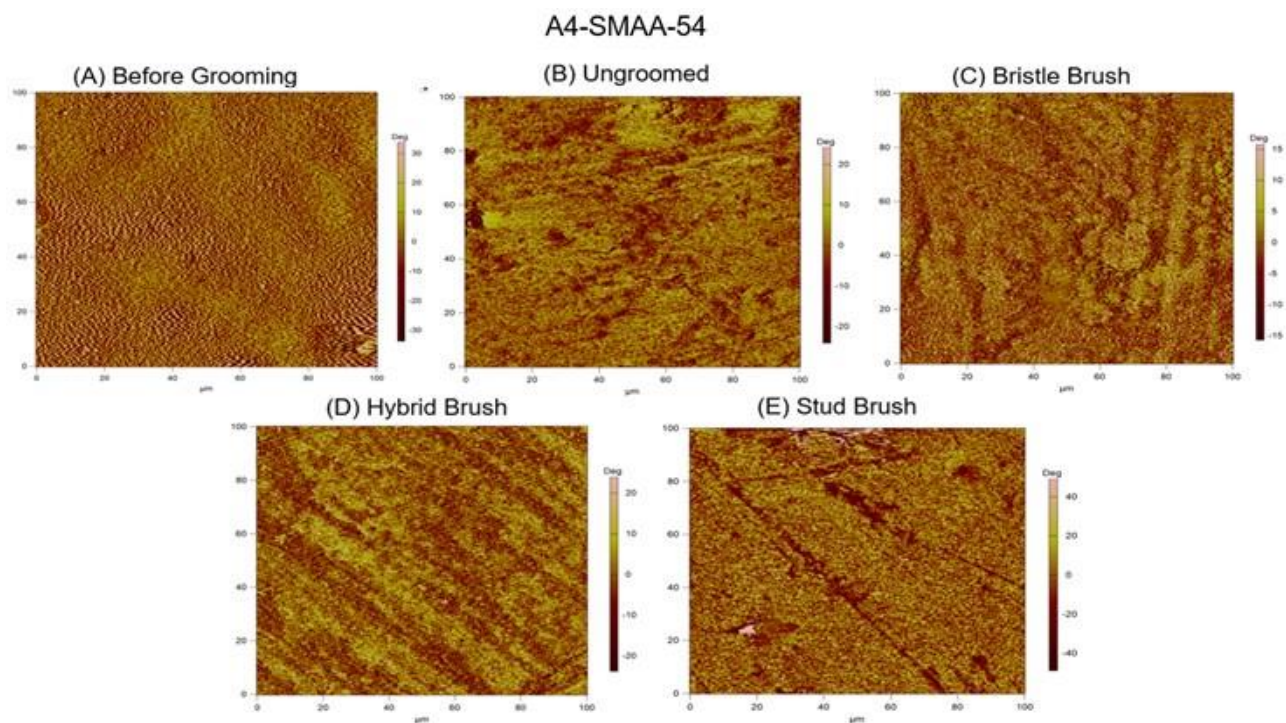


**Figure S13.** ATR-FTIR spectra of the surface of experimental coatings based on the A4-20 system. The spectrum of each coating is labeled to reflect if it was groomed and/or how it was groomed.

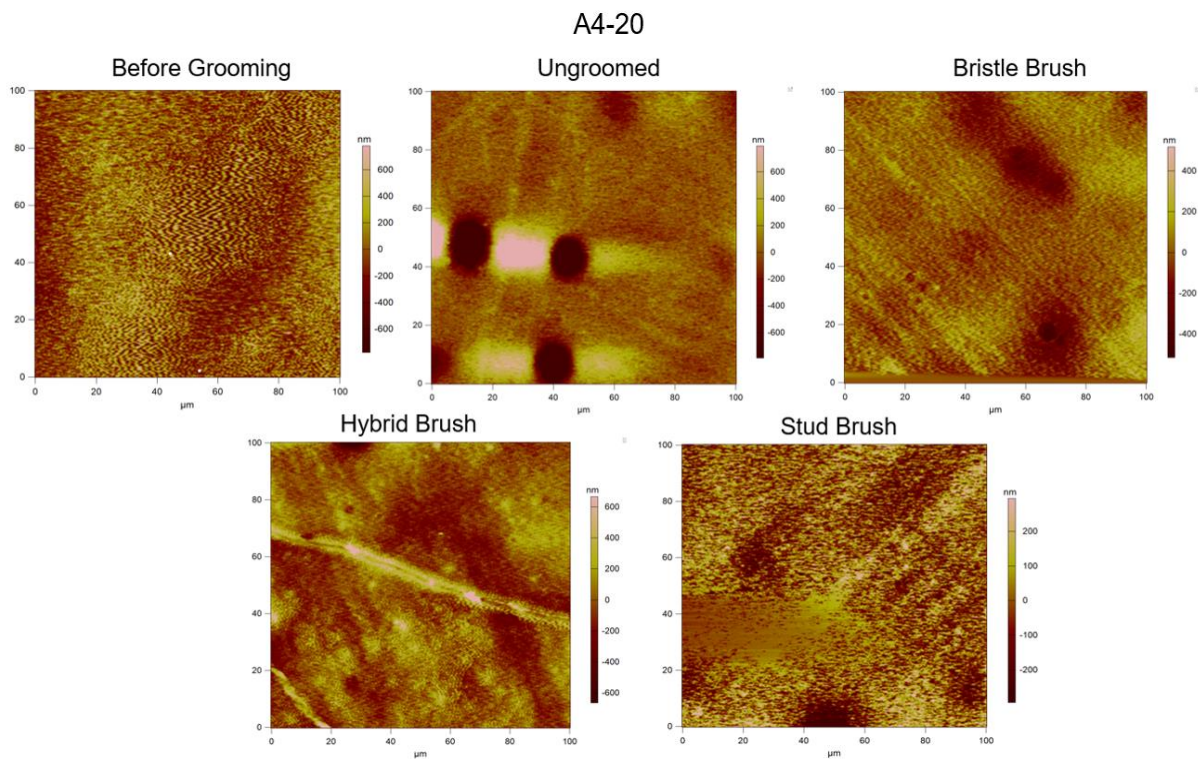


**Figure S14.** AFM phase images for A4-SO-0021 coatings before grooming, ungroomed, and after grooming. Each image is for an area of 100  $\mu\text{m}$  x 100  $\mu\text{m}$ .

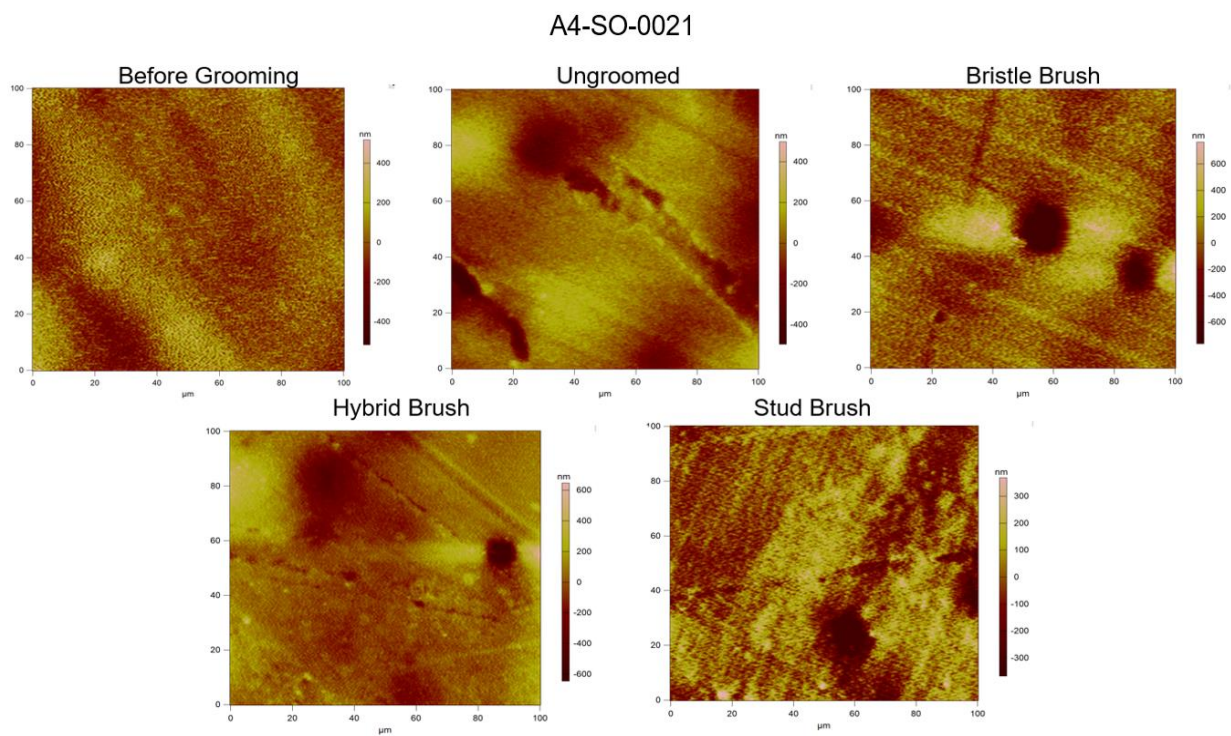




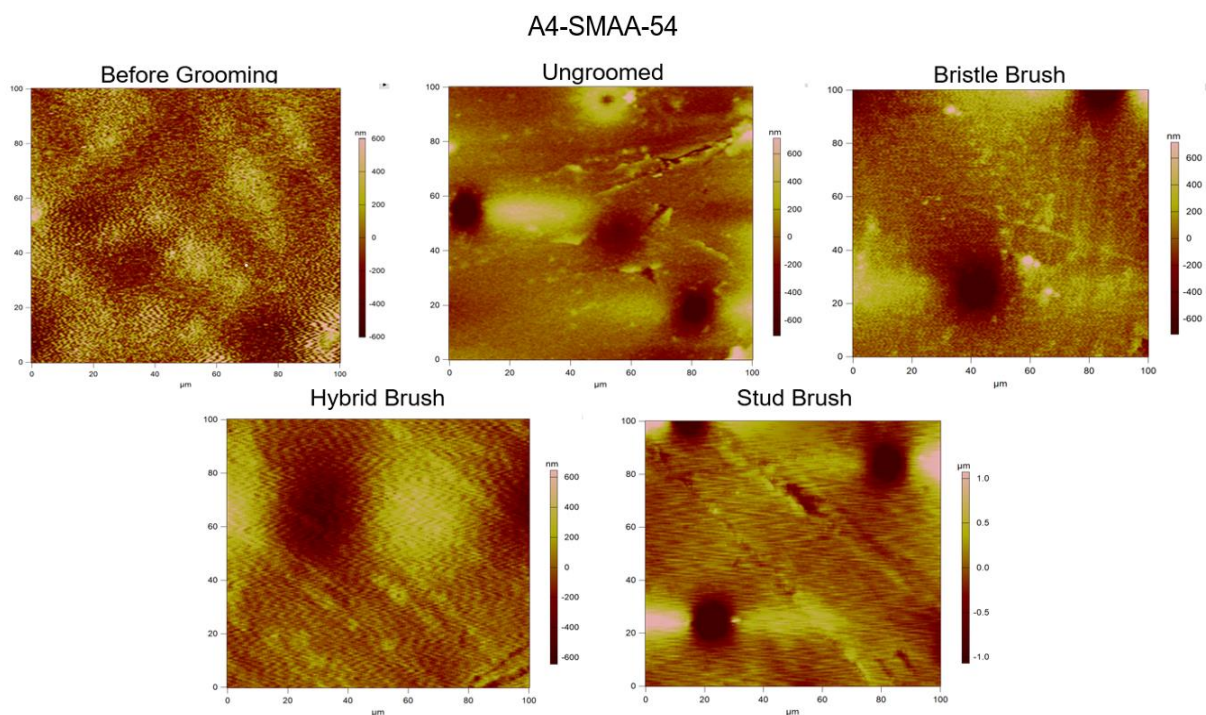
**Figure S15.** AFM phase images for A4-SMAA-54 coatings before grooming, ungroomed, and after grooming. Each image is for an area of 100  $\mu\text{m}$  x 100  $\mu\text{m}$ .



**Figure S16.** AFM height images (100 x 100  $\mu\text{m}$ ) of A4-20 coatings



**Figure S17.** AFM height images (100 x 100  $\mu\text{m}$ ) for A4-SO-0021 coatings.



**Figure S18.** AFM height images (100 x 100  $\mu\text{m}$ ) for A4-SMAA-54 coatings.