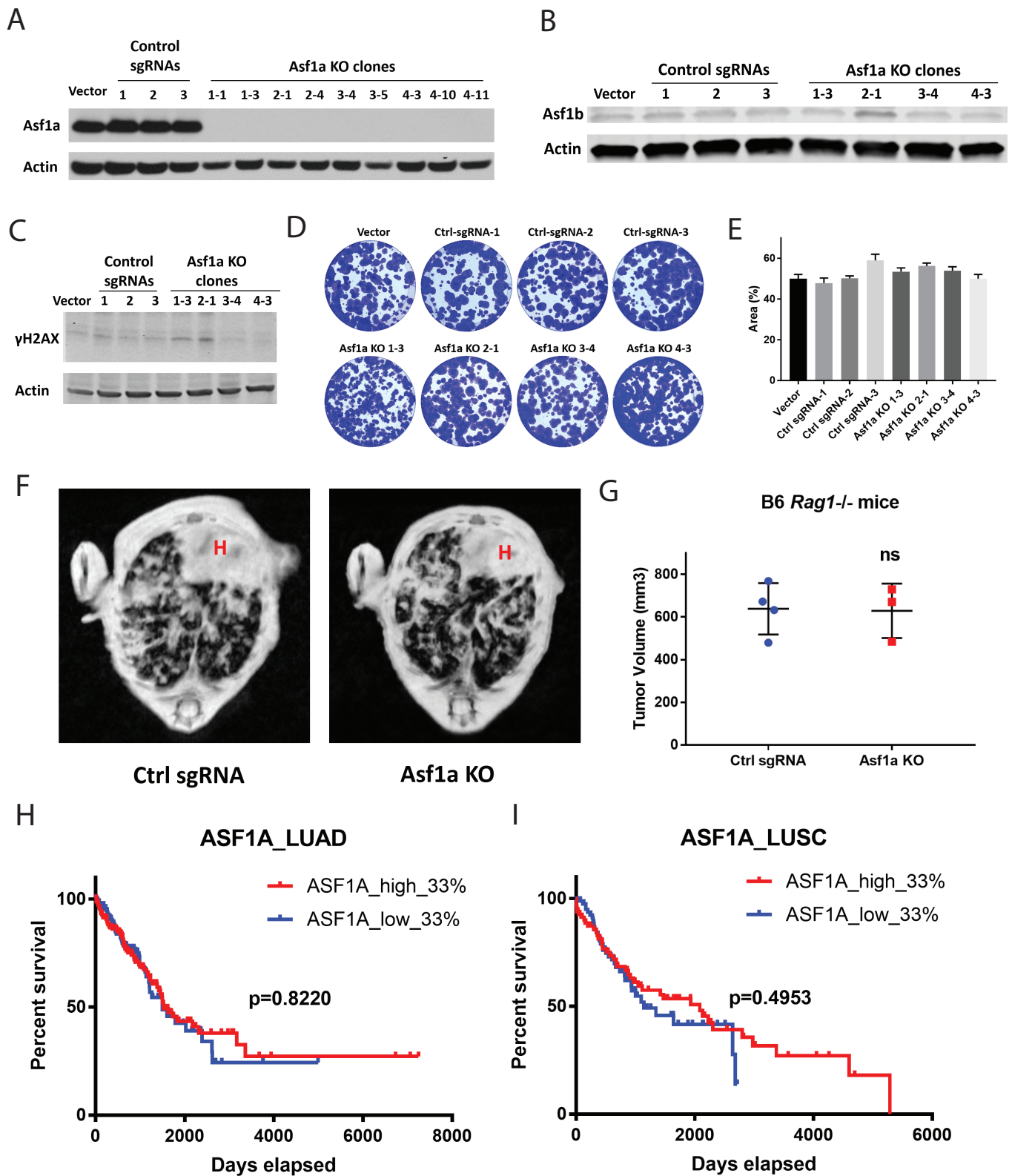


Supplementary Fig. 4



Supplementary Figure 4. Loss of *Asf1a* shows no significant effect on DNA damage and tumor cell proliferation. **A-C**, Western blot analysis showing the expression of *Asf1a* (**A**), *Asf1b* (**B**) and γ H2AX (**C**) in KP cells with or without *Asf1a* KO. Mouse β -actin was used as a loading control. **D**, Colony formation assays for KP cells with or without *Asf1a* KO. **E**, Quantification of results from (**D**). **F**, Representative MRI scans (1 of 24 scanned images of each mouse) of lung tumors in B6-*Rag1*^{-/-} mice generated by tail vein injection with KP cells with or without *Asf1a* KO. "H" indicates the heart. **G**, Quantification of the tumor burden from images shown in (**F**) (ns, not significant). **H-I**, Kaplan-Meier survival curve of ASF1A-high (Top 33%) and ASF1A-low (Bottom 33%) lung ADC (**H**) or SCC (**I**) patients in TCGA. Top 33% and bottom 33% of *ASF1A* expression level was determined using RNA-seq data.