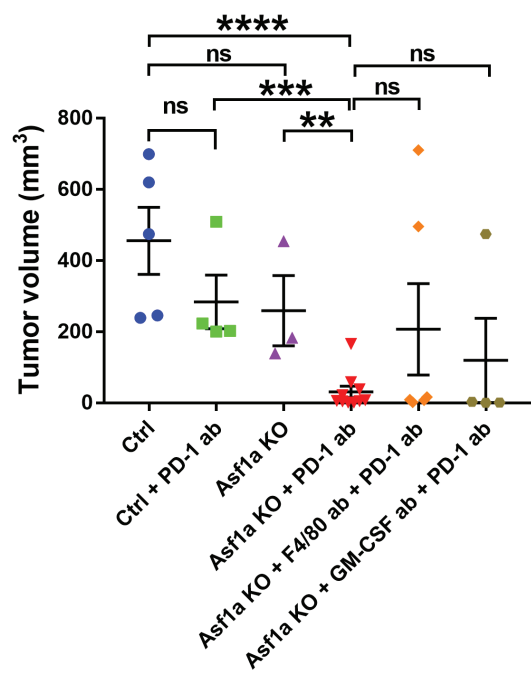
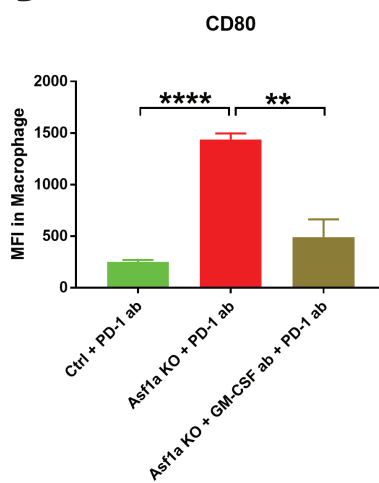


Supplementary Fig. 14

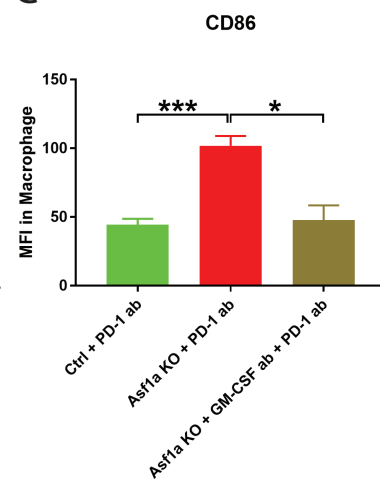
A



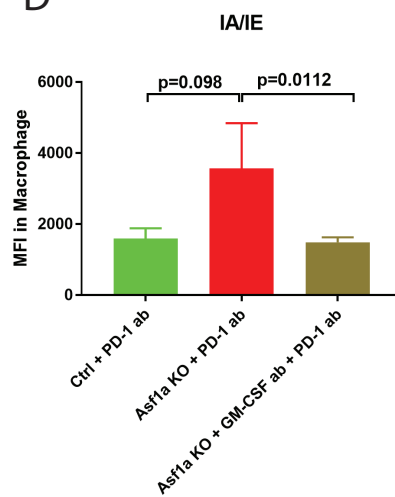
B



C



D



Supplementary Figure 14. In vivo F4/80 or GM-CSF blockade attenuates anti-tumor immune response in *Asf1a* KO and anti-PD-1 combination therapy. **A**, Treatment study in KP allograft model with a new cohort shows the effects of different treatments on tumor progression. MRI images at week 3 were quantified and the tumor volumes are shown. (Ctrl, n=5; Ctrl + PD-1, n=4; *Asf1a* KO, n=3; *Asf1a* KO + PD-1 ab, n=10; *Asf1a* KO + F4/80 ab + PD-1 ab, n=6; *Asf1a* KO + GM-CSF ab + PD-1 ab, n=4). Some mice in Ctrl group, Ctrl + PD-1 ab group, *Asf1a* KO + GM-CSF ab + PD-1 ab, and *Asf1a* KO group died before week 3 MRI imaging, and are not included here. **B-D**, Flow cytometry analysis of the expression of M1 macrophage markers CD80 (**B**), CD86 (**C**) and IA/IE (**D**) in macrophages. For flow cytometry analyses in (**D-D**), whole tumor-bearing lungs from the trans-thoracic injection model were harvested and processed for flow cytometry analysis after 3 weeks of treatment. (Ctrl + PD-1 ab, n=4; *Asf1a* KO + PD-1 ab, n=4; *Asf1a* KO + GM-CSF ab + PD-1, n=4). All data are mean \pm SEM. * $p < 0.05$, ** $p < 0.01$, *** $p < 0.001$, **** $p < 0.0001$ (ns, not significant).