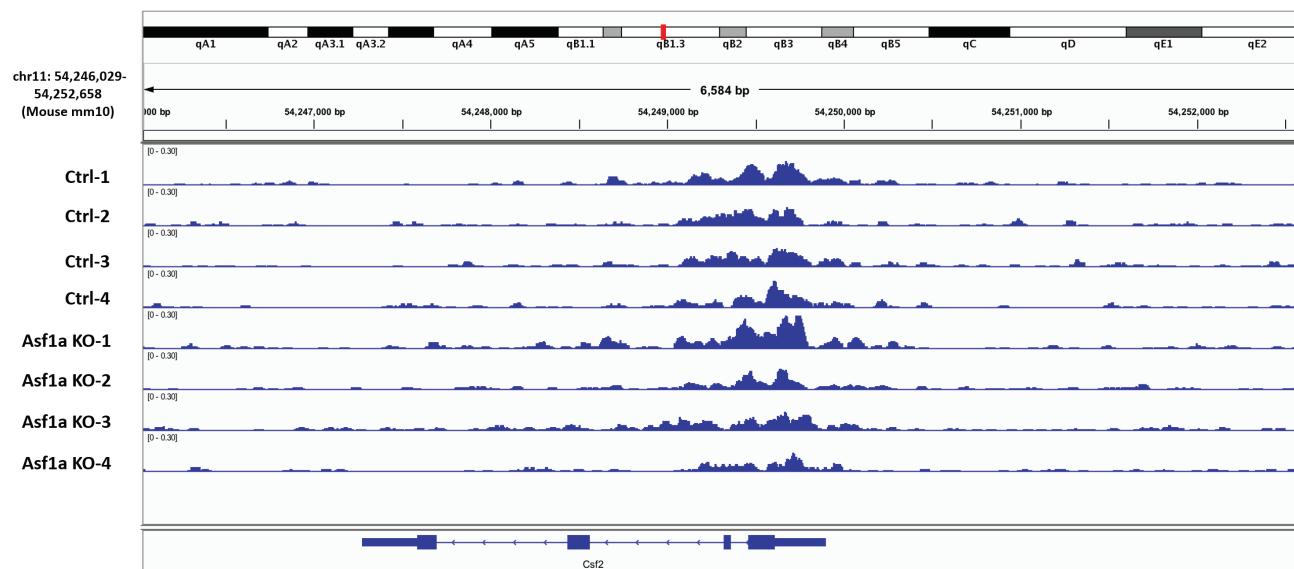
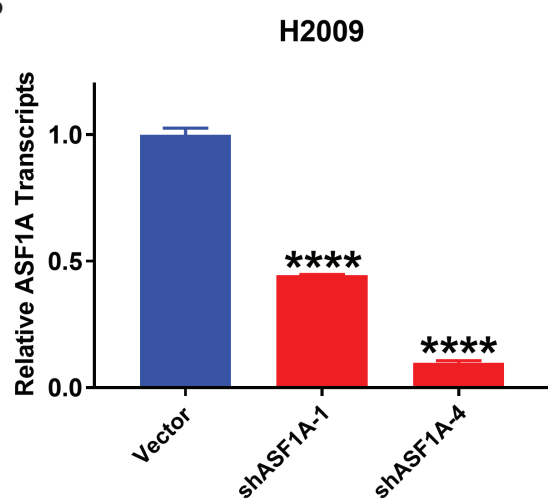


Supplementary Fig. 12

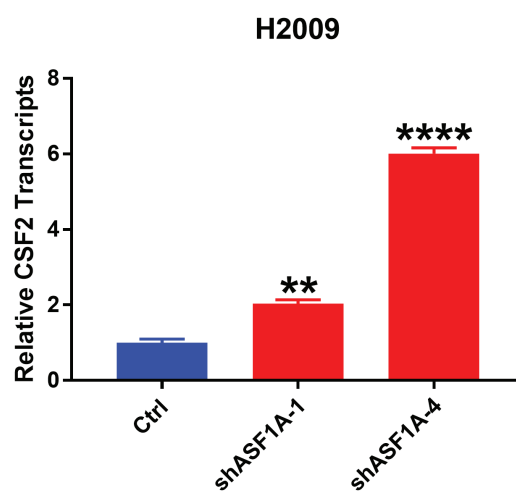
A



B



C



Supplementary Figure 12. ATAC-seq in KP cells and the up-regulation of CSF2 by ASF1A knockdown in H2009 cells. **A**, ATAC-seq shows the DNA accessibility of the gene *Csf2* in KP cells with or without *Asf1a* KO. **B, C**, Real-time qPCR analysis of *ASF1A* (**B**) and *CSF2* (**C**) expression in H2009 cells with or without *ASF1A* knockdown. All data are mean \pm SEM. ** $p < 0.01$, **** $p < 0.0001$.