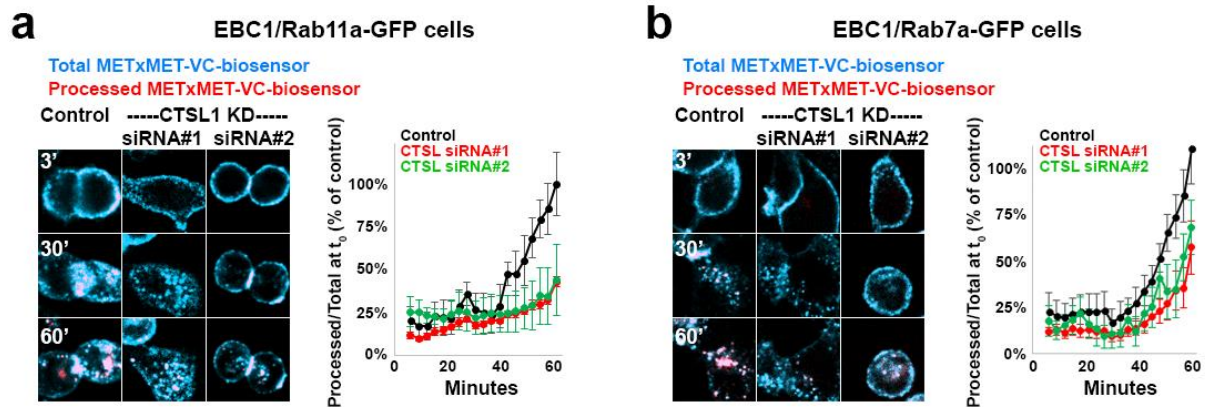


Supplementary fig 4



Supplementary Fig 4. Cathepsin-L1 knock down inhibits METxMET-VC-biosensor processing at the whole cell level in EBC1 cells expressing Rab11a-GFP or Rab7a-GFP. METxMET-VC-biosensor was pre-bound to the surface of control or cathepsin-L knock down EBC1/Rab11a-GFP (**a**) or EBC1/Rab7a-GFP cells (**b**) and internalization was recorded in real time with confocal live imaging. Cathepsin-L knock down inhibited METxMET-VC-biosensor cleavage at the whole cell level, as quantified by the mean intensity fluorescence of AF568 (green) over that of AF647 (red) at t_0 and normalized to control. Representative images (left) and quantification (right) from 5 ROIs/condition containing 1-5 cells each.