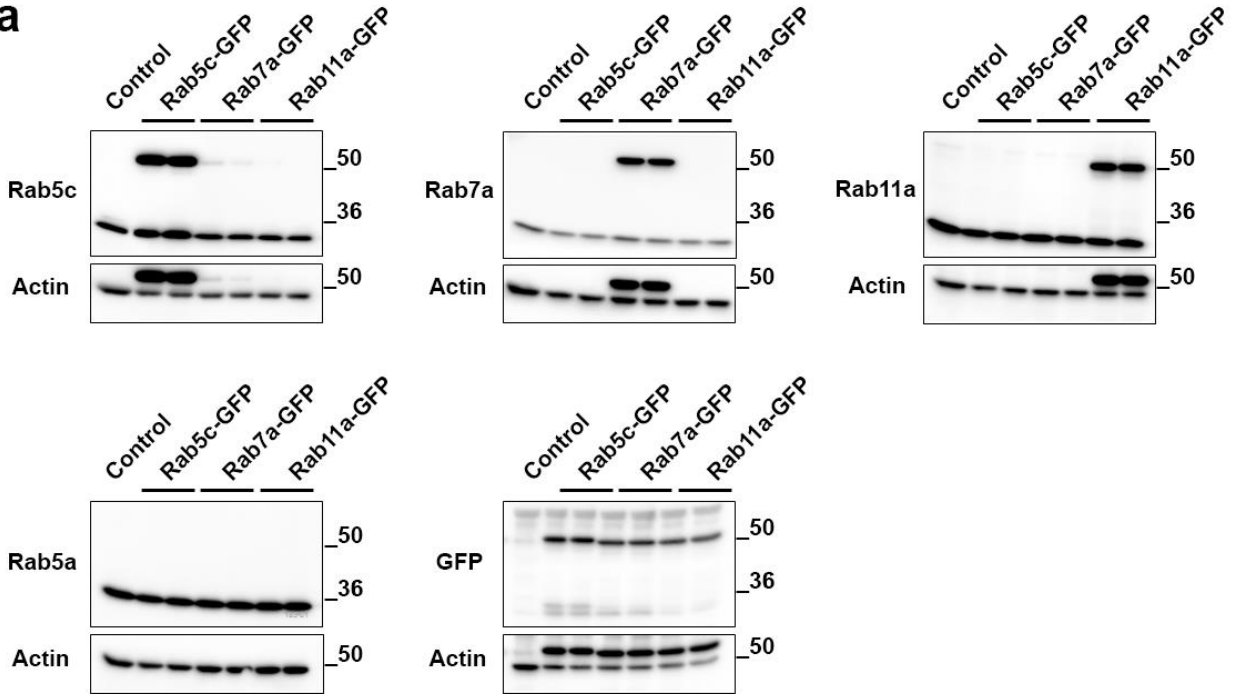
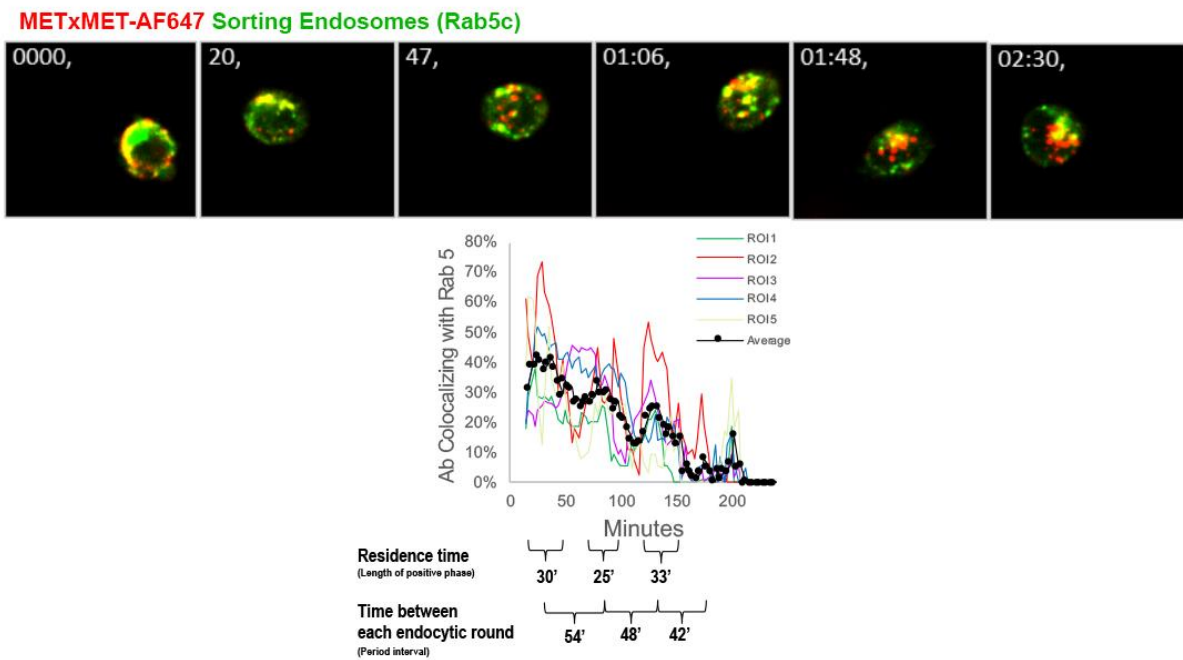


Supplementary fig 1

**a**



**b**



Supplementary Fig 1. METxMET Ab undergoes several rounds of internalization and recycling

**between endosomes and the plasma membrane. (a)** Western blot analysis showing stable expression of the endosome markers Rab5c-GFP, Rab7a-GFP and Ra11a-GFP. **(b)** METxMET-AF647 was pre-bound on ice to the surface of EBC1 cells stably expressing Rab5c-GFP and internalization was recorded in real time with confocal live imaging. Trafficking to sorting endosomes was quantified by the colocalization of METxMET-AF647 (red) with Rab5c-GFP (green), using MCC. Representative images (top) and quantification of 5 ROIs (bottom).