

Supporting Information

Enrichment and delivery of target proteins into the cell cytosol *via* Outer Membrane Vesicles

Huan Wang,^{‡a} Zhiqing Tao,^{‡b,c} XiaoLing Zhao,^{‡d,e} Guan Wang,^{b,c} Yun Peng,^b Yihao
Chen,^{b,c} Juan Zhang,^d Xu Zhang,^{b,c} Maili Liu,^{b,c,f} Guosheng Jiang,^{a,g*} Lichun He^{b,c*}

a. School of Life Science and Technology, Weifang Medical University, Weifang,

Shandong 261053, P. R. China.

b. State Key Laboratory of Magnetic Resonance and Atomic Molecular Physics,

National Center for Magnetic Resonance in Wuhan, Innovation Academy for

Precision Measurement Science and Technology, Chinese Academy of Sciences,

Wuhan 430071, China.

c. University of Chinese Academy of Sciences, Beijing 100049, China.

d. Department of Reproductive Medicine General Hospital of Central Theater

Command of the People's Liberation Army, Wuhan, Hubei 430061, China.

e. Qinhe Life Science Ltd. Wuhan 430000, China

f. Optics Valley Laboratory, Hubei 430074, China.

g. Institute of Immunology and Biotechnology Transformation, Binzhou Medical
University, Yantai, Shandong 264000, P.R. China.

‡ These authors contributed equally to this work

* Corresponding Authors: Lichun He. Email: helichun@apm.ac.cn; Guosheng Jiang.

Email: jiangguosh@163.com

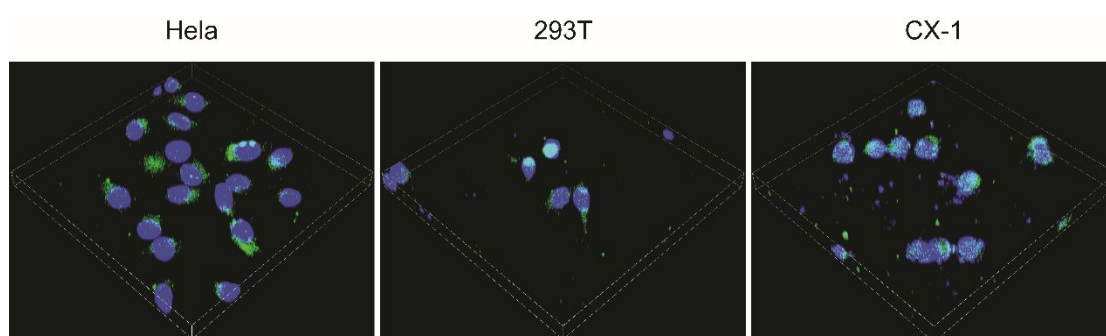


Figure S1. CLMS Z-stack 3D images of HeLa, 293T, and CX-1 cells. Nuclei are colored in blue and cargo proteins are colored in green.

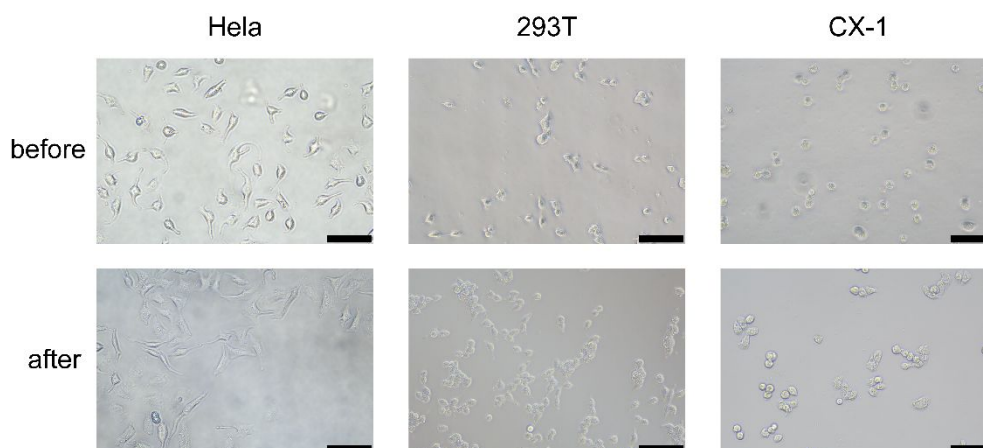


Figure S2. Microscope images of HeLa, 293T, CX-1 cells before and after incubation with OMVs for 16 h. Magnification: $\times 200$. Scale bar: $100\mu\text{m}$.

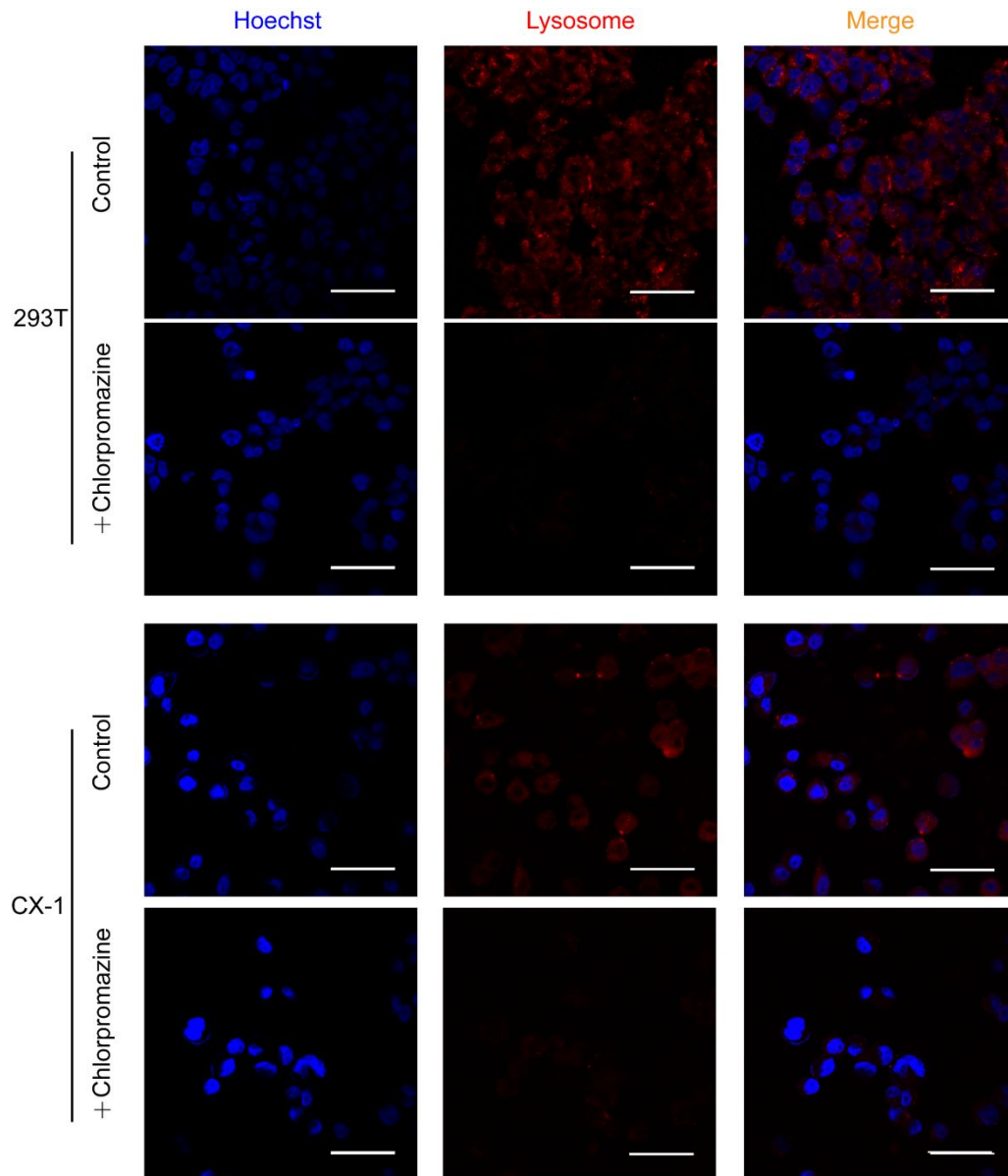


Figure S3. CLMS images of 293T and CX-1 incubated with DiI-labeled OMV for 6h with and without the pre-treatment of 15 μ g/ μ l Chlorpromazine. Scale bar: 50 μ m.