

1 **Supplementary information**

2

3 **Design of a microfluidic lung chip and its application in assessing the toxicity of**
4 **formaldehyde**

5 Man Su¹, Xiang Li^{1,*}, Zezhi Li², Chenfeng Hua¹, Pingping Shang¹, Junwei Zhao¹, Kejian Liu¹, Fuwei
6 Xie^{1,*}

7 ¹ Key Laboratory of Tobacco Chemistry, Zhengzhou Tobacco Research Institute of CNTC, No. 2
8 Fengyang Street, Zhengzhou 450001, PR China

9 ² Beijing Technology and Business University, Beijing 100048, PR China

10 * Corresponding authors,

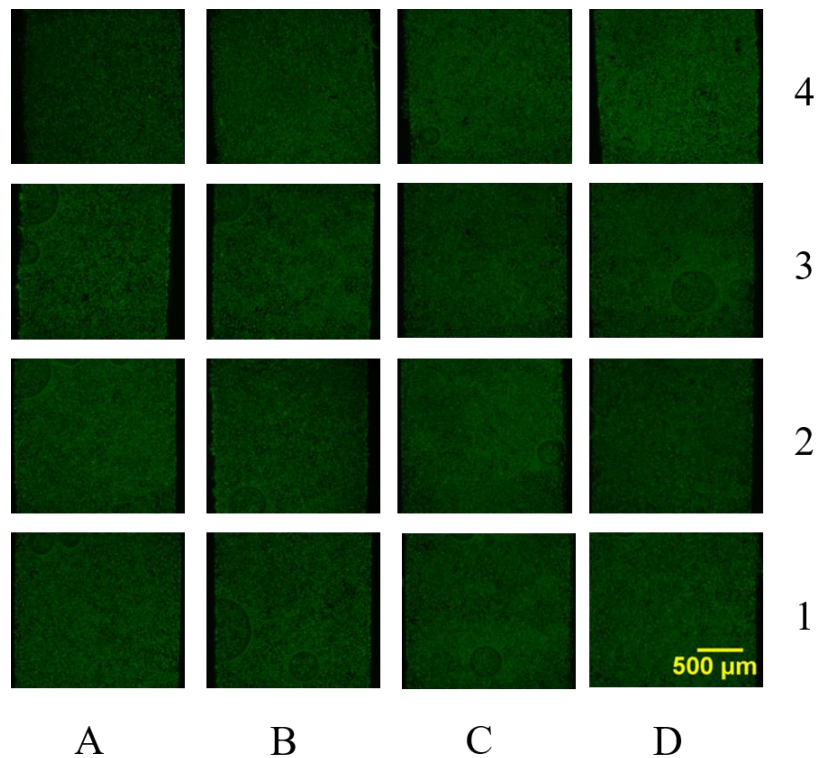
11 Xiang Li: lixiang79ben@sina.com

12 Fuwei Xie: xiefuwei@sina.com

13

14

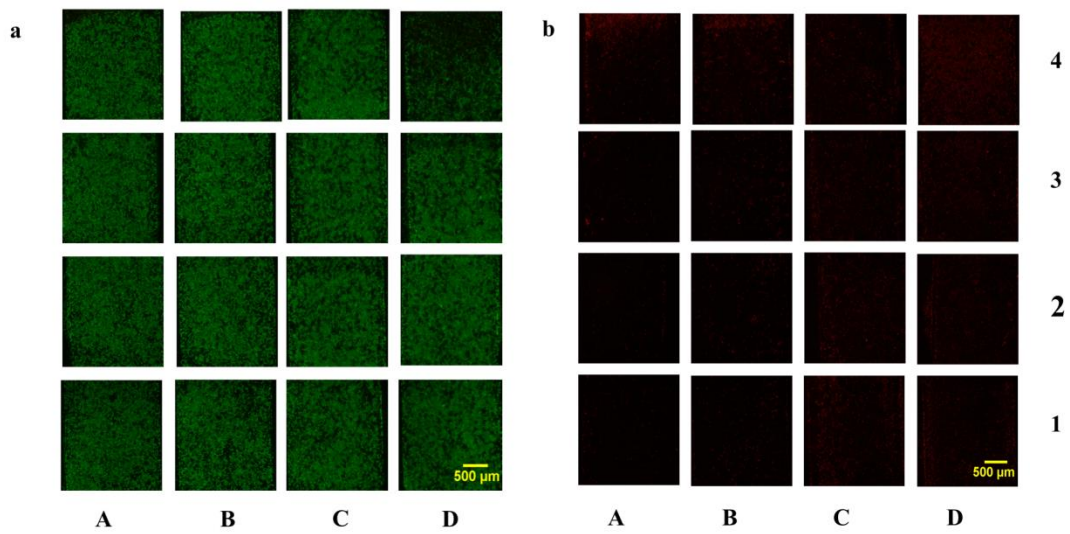
15



16

17 **SI S1. Staining of living cells on the chip at 24 h.** A,B,C,D represent four gas channels; 1,2,3,4

18 represent four liquid channels.



19

20 **SI S2. Cell staining results under formaldehyde exposure at the concentration of 6×10^{-5} mol/L. a.**

21 Cell staining result of live cells at 6×10^{-5} mol/L formaldehyde. b. Cell staining result of dead cells at

22 6×10^{-5} mol/L formaldehyde. A,B,C,D represent four gas channels; 1,2,3,4 represent four liquid

23 channels.