

Supplementary Figure S1 Univariate and multivariate Cox regression analysis.

(A) Univariate Cox regression analysis revealed age, grade, stage and MRLrisk as prognosis-related factors in training set.

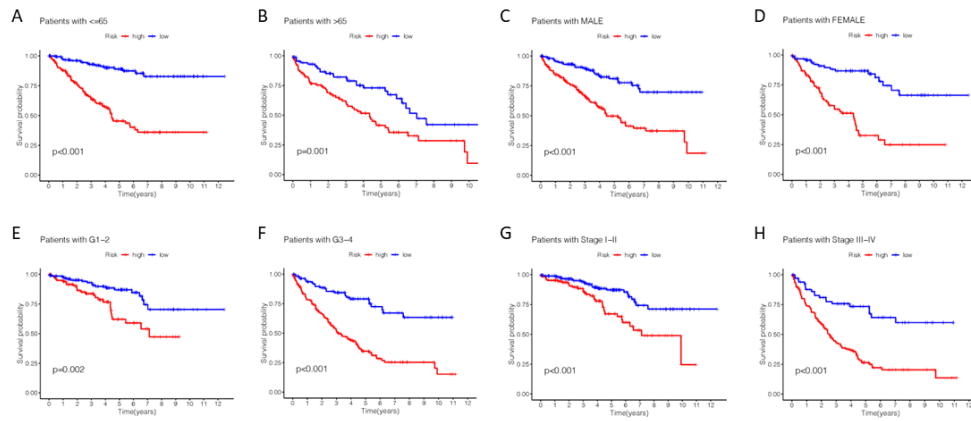
(B) Multivariate Cox regression analysis revealed age, grade, stage and MRLrisk as independent prognostic factors in training set.

(C) Univariate Cox regression analysis revealed age, grade, stage and MRLrisk as prognosis-related factors in testing set.

(D) Multivariate Cox regression analysis revealed age, grade, stage and MRLrisk as independent prognostic factors in testing set.

(E) Univariate Cox regression analysis revealed age, grade, stage and MRLrisk as prognosis-related factors in overall set.

(F) Multivariate Cox regression analysis revealed age, grade, stage and MRLrisk as independent prognostic factors in overall set.



Supplementary Figure S2 Kaplan-Meier curves of the OS of patients in the high- and low-risk subgroups.

(A, B) Patients were stratified by age (≤ 65 vs. >65).

(C, D) Patients were stratified by gender (male vs. female).

(E, F) Patients were stratified by AJCC grade (G1-2 vs. G3-4).

(G, H) Patients were stratified by TNM stage (stage I-II vs. stage III-IV).