

Table S1. Primers for expression studies

Primer	Forward sense
<i>ApoE</i>	TGGGTCGCTTTTGGGATTACC
<i>Fasn</i>	GCAGCTGTTGGTTTGTCTG
<i>Actb</i>	CACTGTCGAGTCGCGTCC
<i>Il1b</i>	TGCCACCTTTTGACAGTGATG
<i>Il6</i>	AGTTCCTCTCTGCAAGAGACTTC
<i>Tnf</i>	TAGCCCACGTCGTAGCAAAC

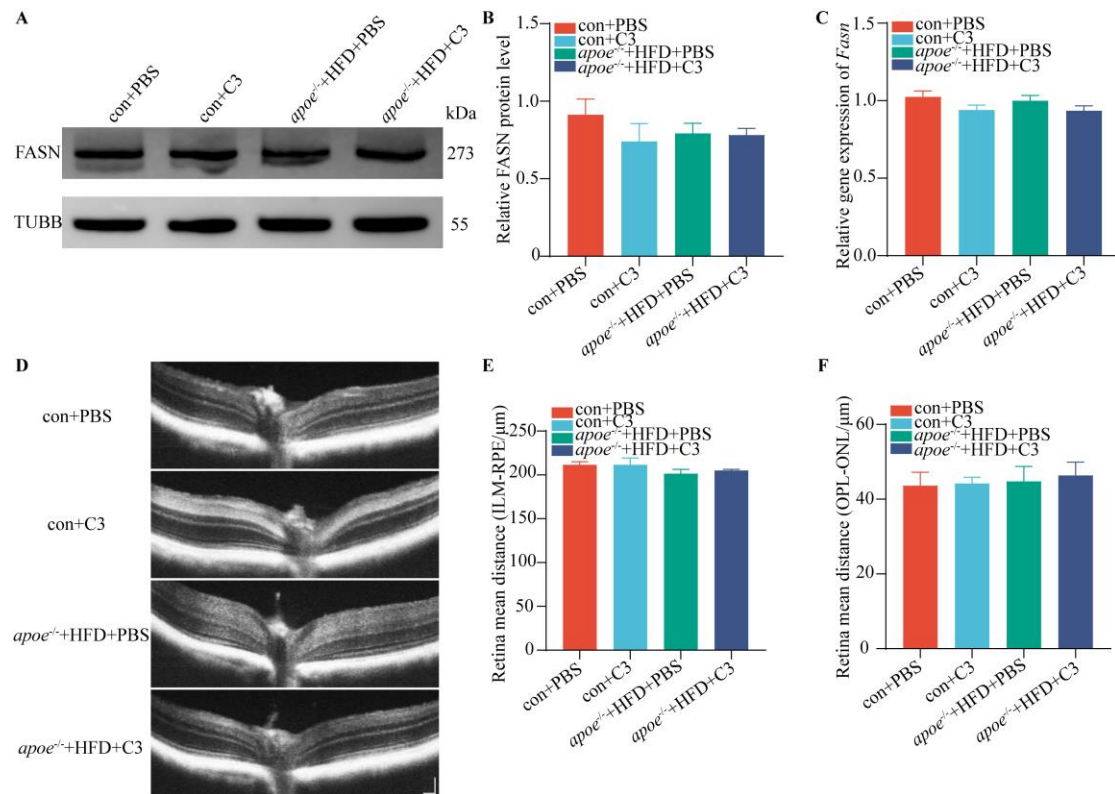


Figure S1. LD-ATTEC treatment had no significant effect on retinal thickness and expression of FASN (fatty acid synthase). (A-B) An immunoblot showing FASN expression was not significantly changed (N = 7). (C) Relative gene expression of *Fasn* in RPE/choroidal tissues by RT-PCR (N = 5). (D-F) Following intravitreal injection of C3 in one eye and the other eye with PBS, optical coherence tomography was used to measure retinal thickness. The retinal length was not changed in all groups (N = 4 mice). Scale bar: 100 μm.